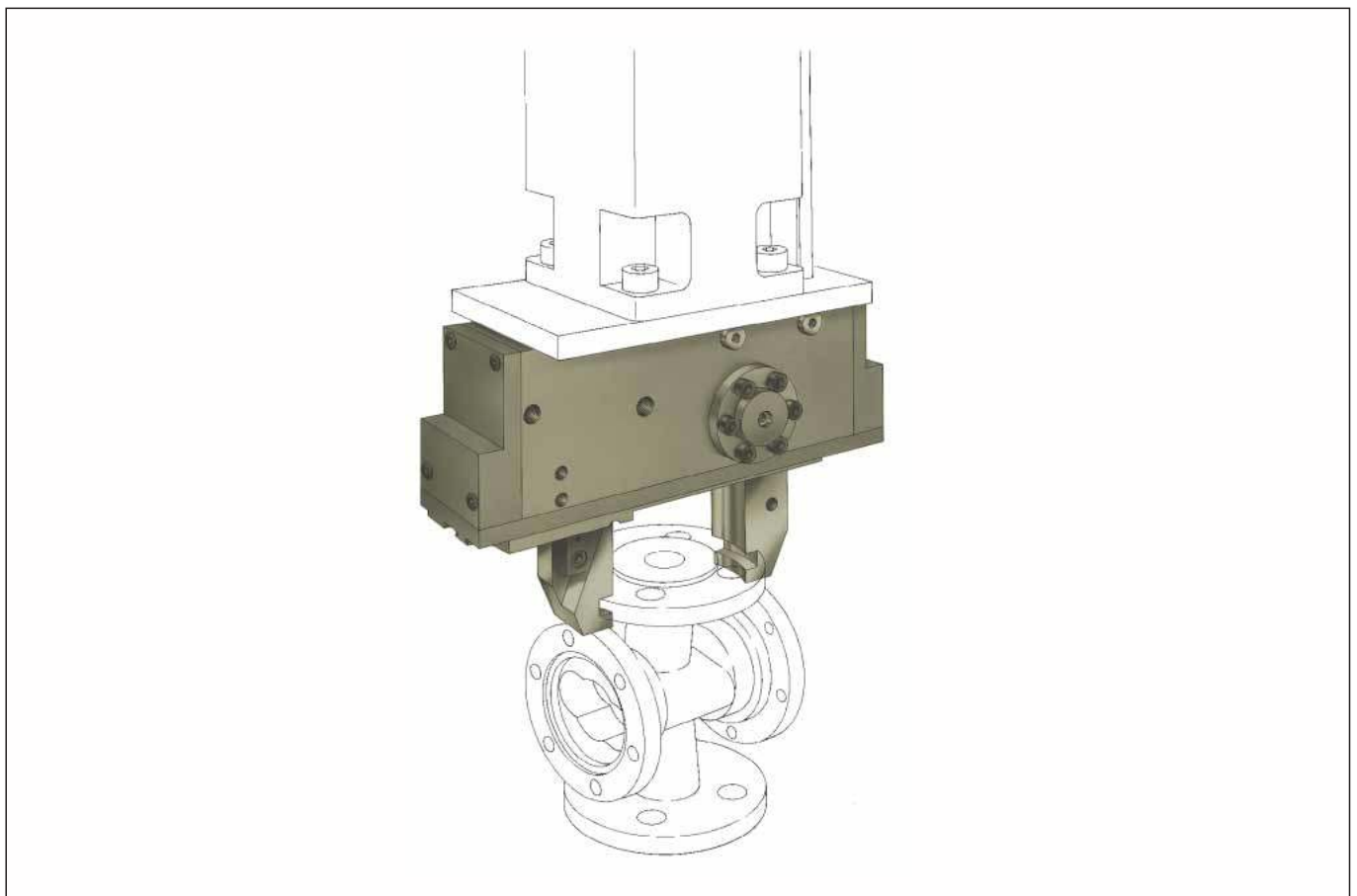


2-Finger Parallel Gripper Type HGH, hydraulic





Benefits

- Hydraulic gripper with 120 mm stroke
- Compact design
- Low weight
- High gripping force
- Dirt and dust proof
- High reliability and long service life
- High axial and radial load capacity
- Suitable for O.D. and I.D. gripping
- Integrated positive locking device
- Multiple fastening possibilities
- Monitoring of finger positions using proximity switches
- Comprehensive user's manual and maintenance instructions
- Warranty: 12 months

Technical data

Method of functioning:

rack and piston drive system

Material:

housing is made of hard-coated, high-strength aluminium and the functional components are hardened steel

Actuation:

hydraulic, hydraulic oil filtered (10 µm), viscosity 46 mm²/s at 40 °C according to ISO VG

Operating pressure range:

from 30 - 60 bar

Maintenance:

maintenance free up to 2,000,000 strokes

Installation position:

application-dependent

Operating temperature:

from 5 °C - 60 °C

Scope of delivery:

brackets for proximity switches, user's manual and maintenance instructions, manufacturer's certificate

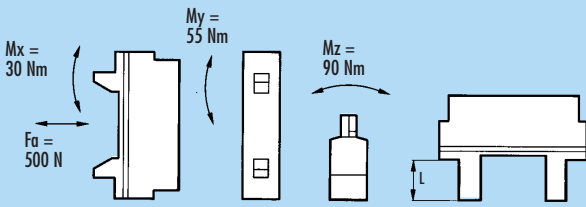
Maintenance of gripping force in the event of a power loss:

Maintenance of gripping force in the event of a power loss: via integrated positive locking device

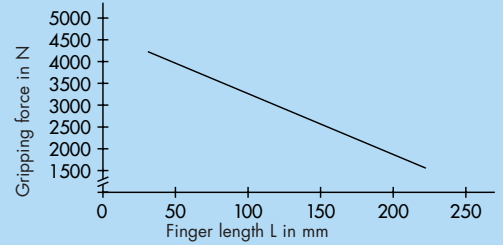
Accessories:

proximity switches

Maximum permissible forces and torques at the gripping fingers *



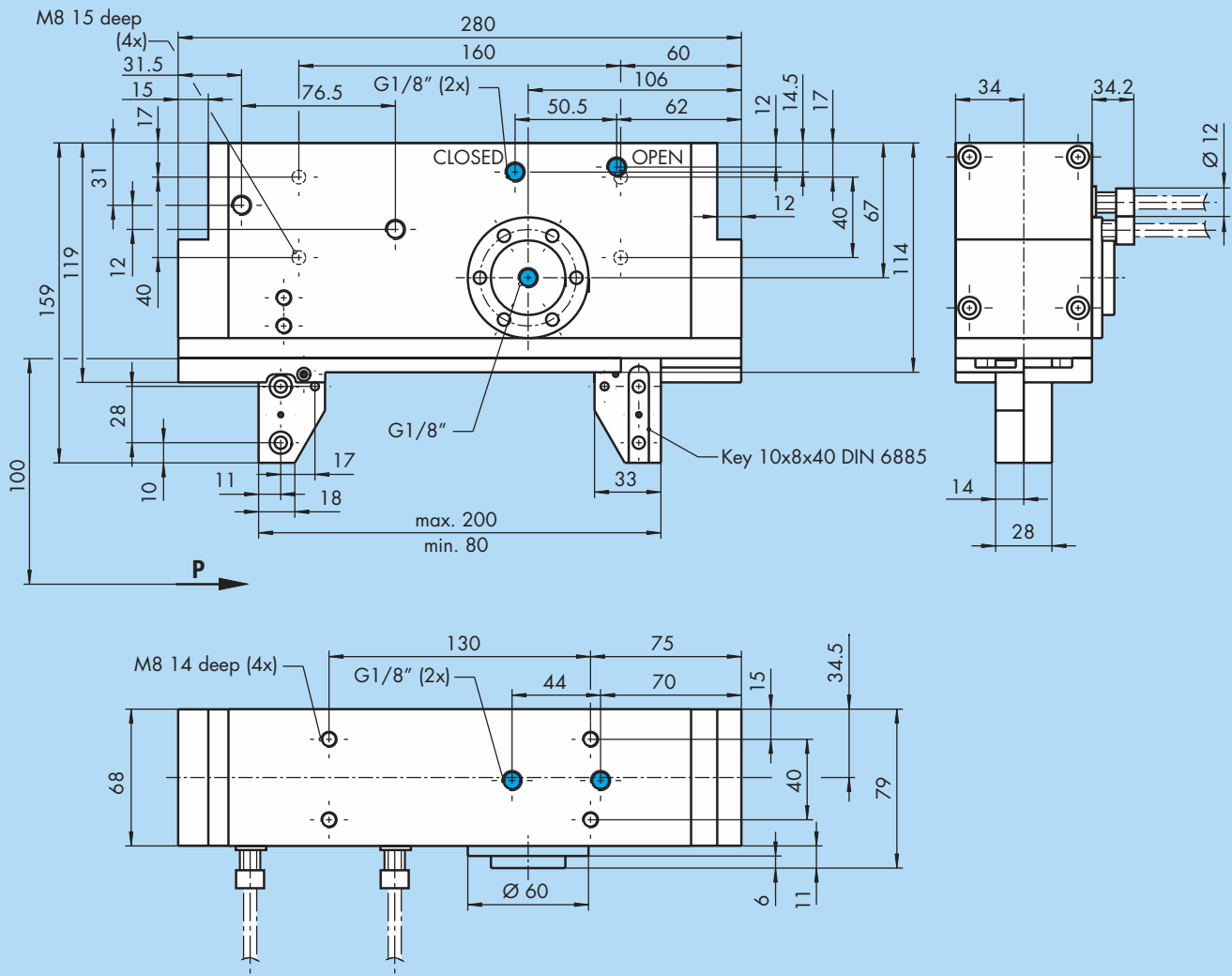
Gripping force in relation to the finger length



*which may occur in addition to the gripping force

Dimensions for HGH 40

● = Oil connection



2-Finger Parallel Gripper HGH 40 with integrated maintenance of gripping force

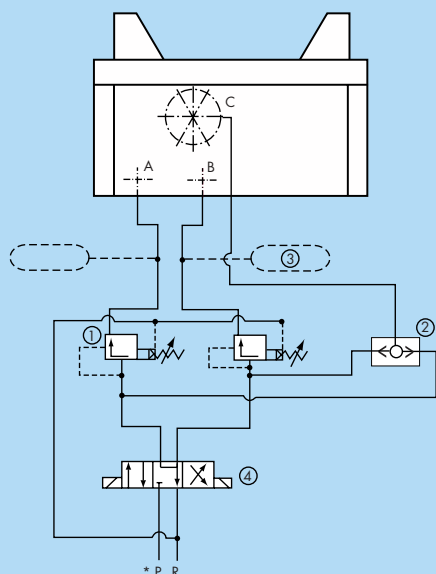
Type	HGH 40
ID. no.	302 920
Stroke per jaw	60 mm
Gripping force at 60 bar*	3300 N
Workpiece weight** (recommended)	16 kg
Oil volume per double stroke	open: 76 cm ³ / close: 64 cm ³
Opening time	1.3 s
Closing time	1.3 s
Mass	6.6 kg
Mass moment of inertia	432 kg cm ²
Repeat accuracy***	0.1 mm
Max. finger length	120 mm

* Gripping force is the arithmetic sum of the individual forces occurring at the gripper jaws, distance P at 60 bar.

** Values at coefficient of friction $\mu = 0.1$ and safety factor $v = 2$. These values may be higher in the case of form-fit clamping.

*** Spread of end positions after 100 consecutive strokes.

Block diagram with pressure valve as switching valve



- ① Pressure valve used to set the switching sequence
- ② Shuttle valve (or-valve)
- ③ Pressure accumulator (optional)
- ④ 4/3 directional control valve, intermediate position is deaerated

* Piston speed is set such that the closing/opening time for a complete stroke is approx. 1.3 sec. at 60 bar. This corresponds to a volume flow of approx. 2.5 l/min. Medium: hydraulic oil, filtered (10 μ m) viscosity 46 mm²/s at 40°C according to ISO VG max. temperature 60°C.

Accessories for HGH 40



Inductive proximity switches

In easy-to-assemble version with LED display. For technical details see chapter on »Accessories«.

Type	ID. no.
INW 80/S	301 508

System modules and further accessories for HGH



Swivel units

For combinable swivel units and heads, see the »Gripper modules« catalogue.



Special solutions

We can quickly supply cost-effective custom solutions, customised fingers, attachment plates and complete units to suit your specialised requirements.



Further accessories

For gripper pads to increase friction factors, pressure maintenance valves or distributors for proximity switches, see the »Accessories« catalogue.

Note

Please note that the lifespan of these units can be reduced considerably if they are used in extreme conditions (e.g. where coolant is used or dust from casting or grinding processes is present). We cannot be held responsible in such cases. Solutions do exist for many problems – please contact us to find out more.