

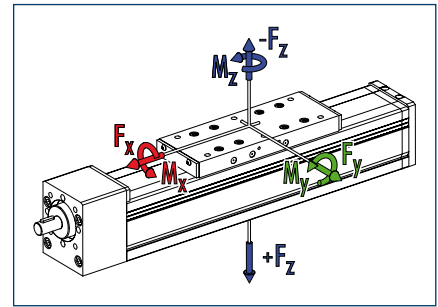
Advantages of profiled rail guide

High load bearing capacity

Long lifetime

High precision

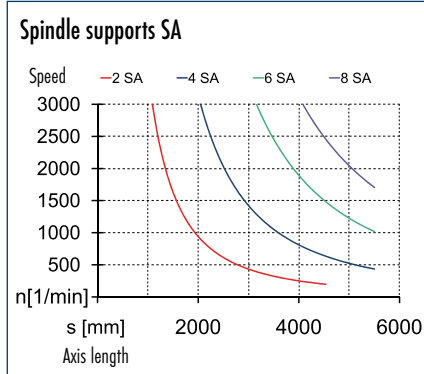
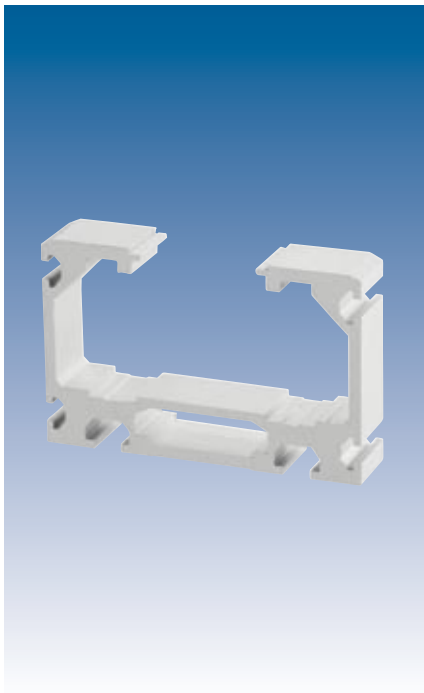
Loads and load torques



Load	Dynamic
F_x^{**} [N]	4000
F_y [N]	1800
F_z [N]	4000
$-F_z$ [N]	3000
Load torques	
M_x [Nm]	350
M_y [Nm]	750 (1000)
M_z [Nm]	750 (1000)
M_{Amax} [Nm]	4.5 (p=5)
	14.0 (p=20)
	33.1 (p=50)

** Depends on speed and pitch n_{max}
 KGT = 3000 rpm; TGT = 1500 rpm

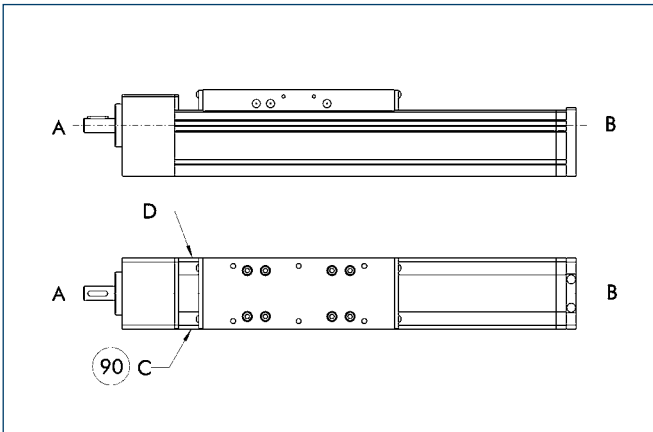
① Values in brackets relate to the long slide.



Technical data

Designation		B 100D-SSS
Max. travel speed	[m/s]	2.5
Repeat accuracy	[mm]	± 0.03
Max. acceleration	[m/s ²]	20
Idle torque	[Nm]	1.3
Maximum stroke	[mm]	5060
Max. total length	[mm]	5400
Moment of inertia	[kgm ²]	0.000085
Drive element		Ball screw spindle drive
Max. spindle speed	[rpm]	3000
Diameter	[mm]	20
Pitch	[mm]	5 / 20 / 50
Drive element		Trapezoidal threaded drive
Max. spindle speed	[rpm]	1500
Diameter	[mm]	20
Pitch	[mm]	4 / 8
Weights		
Basic without travel	[kg]	6.2
Travel per 100 mm	[kg]	0.75
Slide plate 210 mm	[kg]	3.4
Slide plate 270 mm	[kg]	4.0

Limit switch position



90 Limit switch standard position

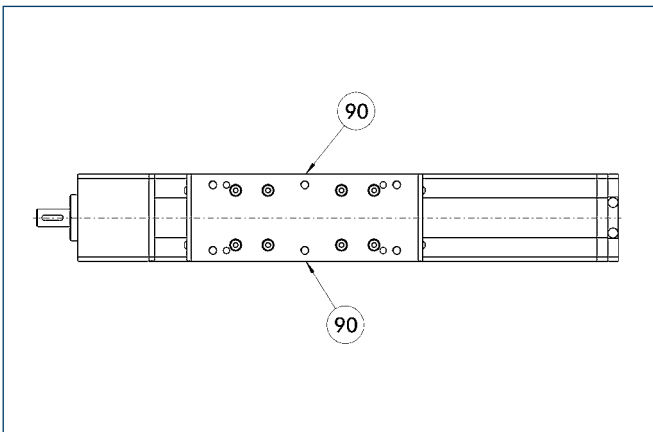
Two E02 switches are used as limit switches and an RS2 as the reference switch as standard.

ⓘ The positions and dimensions of limit switches, switching lugs, and mounting components may vary depending on the application and the selected limit switches. Please contact us for assistance.

Limit switch selection

Designation	Order designation	ID no.
Inductive limit switch, opener, 2 m cable	E02	0331410
Inductive limit switch, opener, 10 m cable	E010	0331412
Inductive limit switch, closer, 2 m cable	ES2	0331411
Inductive limit switch, closer, 10 m cable	ES10	0331413
Mechanical limit switch (Siemens), opener	EMS	0331414
Mechanical limit switch (Balluff), opener	EMB	0331415

Lubrication connections



90 Standard lubrication connection

Standard connection

Lubrication nipple M8x1

If the lubrication connection has a different seat, this must be defined in the order text.

More detailed information on pedestal bearings, connection shafts and bevel gears can be found in the "OPTIONS for System HSB" section of the catalog.