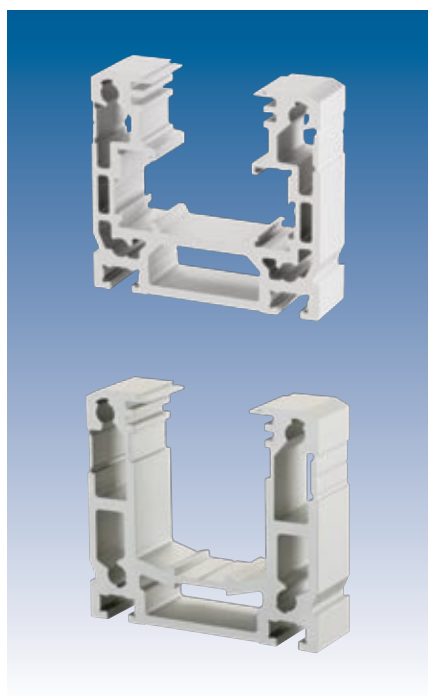


B 70C-ARS/-ASS

Linear Axes • **Toothed-belt Drive**



Advantages of roller guide

High maximum moments
due to optimum force transmission to the profile

Long stroke lengths
can be achieved with no problems

Life-time lubricated rollers
for easy maintenance use

Smooth, low-noise running

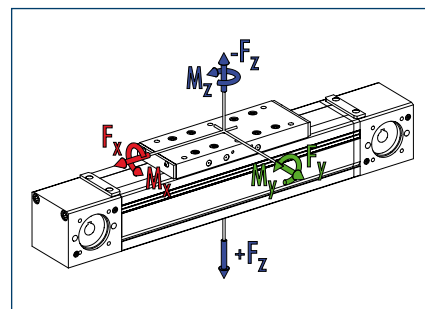
Advantages of profiled rail guide

High load bearing capacity

Long lifetime

High precision

Loads and load torques



Load		ARS dynamic	ASS dynamic
■ F_x^{**}	[N]	900	900
■ F_y	[N]	300	600
■ F_z	[N]	1000	1800
■ $-F_z$	[N]	400	1200
Load torques		ARS dynamic	ASS dynamic
■ M_x	[Nm]	35	60
■ M_y	[Nm]	120	180
■ M_z	[Nm]	50	120
■ M_{Amox}	[Nm]	32.5	32.5

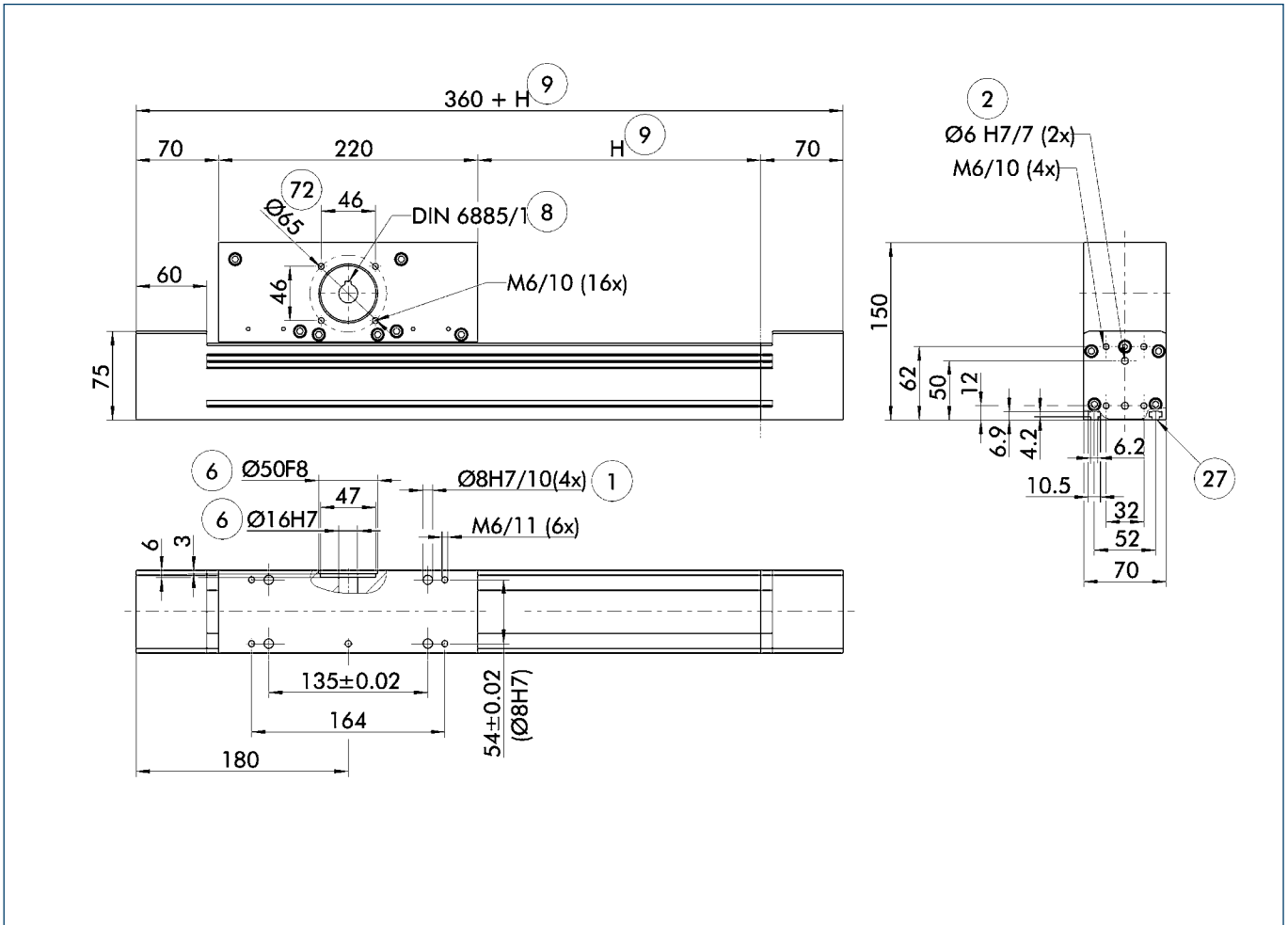
** Maximum value = Depending on speed

① Values in brackets relate to the long slide.

Technical data

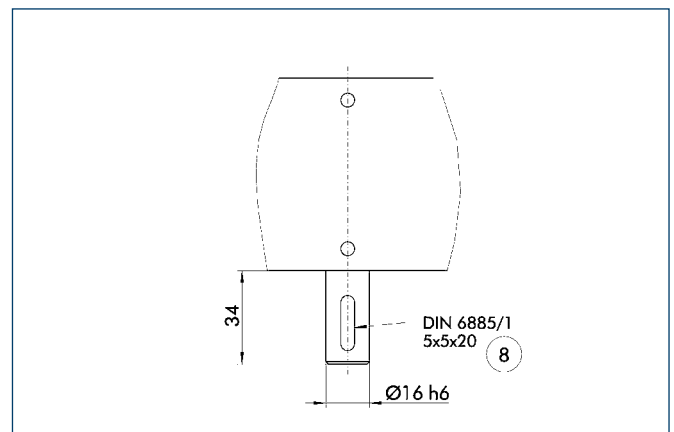
Designation		B 70C-ARS	B 70C-ASS
Max. travel speed	[m/s]	5	5
Repeat accuracy	[mm]	± 0.08	± 0.08
Max. acceleration	[m/s ²]	30	30
Idle torque	[Nm]	1	1
Drive			
Drive element	Toothed belt	32 AT 5-E	32 AT 5-E
Travel per revolution	[mm]	220	220
Maximum stroke	[mm]	7640	7640
Max. total length	[mm]	8000	8000
Moment of inertia	[kgm ²]	0.0061	0.0061
Weights			
Basic without travel	[kg]	7.5	7.9
Travel per 100 mm	[kg]	0.38	0.60
Slide drive 220 mm	[kg]	5.0	5.5

Main views



- | | |
|--------------------------|------------------------------|
| ① Linear unit connection | ⑳ Mounting groove for T-nuts |
| ② Assembly connection | ㉑ Bolt pitch circle |
| ③ Drive connection | |
| ④ Feather key DIN 6885 | |
| ⑤ Useful stroke | |

Drive journal connection dimensions

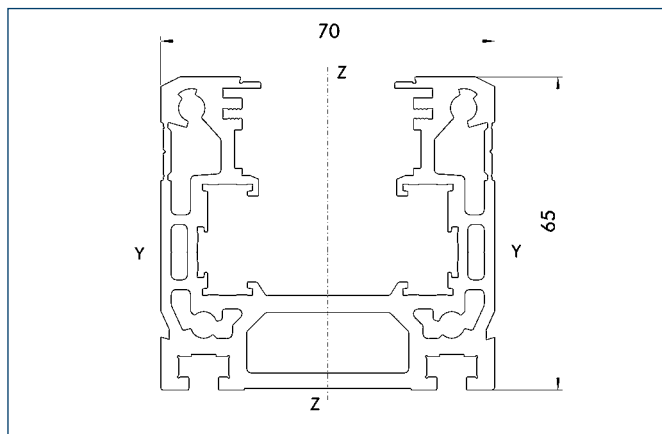


- ⑧ Feather key

B 70C-ARS/-ASS

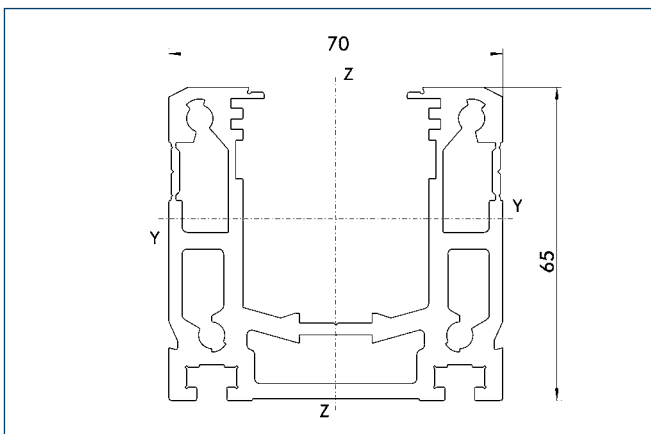
Linear Axes • Toothed-belt Drive

Profile ARS



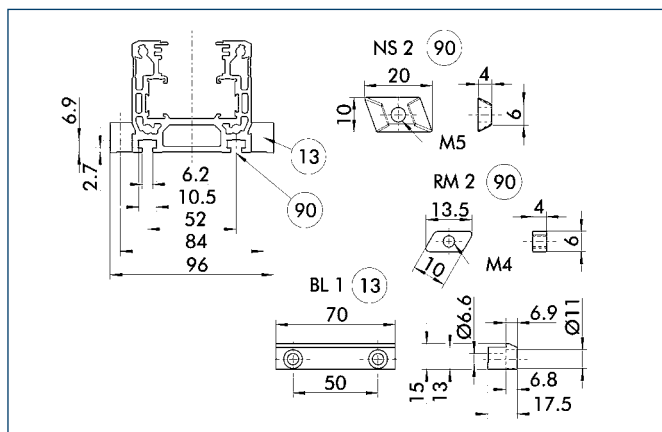
Specific mass	[kg/m]	3.7
Planar dimension	[mm ²]	1370
Planar moment of inertia I _y	[mm ⁴]	585283
Planar moment of inertia I _z	[mm ⁴]	854713
Load torque W _y	[mm ³]	15835
Load torque W _z	[mm ³]	24410

Profile ASS



Specific mass	[kg/m]	3.7
Planar dimension	[mm ²]	1370
Planar moment of inertia I _y	[mm ⁴]	563059
Planar moment of inertia I _z	[mm ⁴]	852507
Load torque W _y	[mm ³]	14743
Load torque W _z	[mm ³]	24335

Mounting



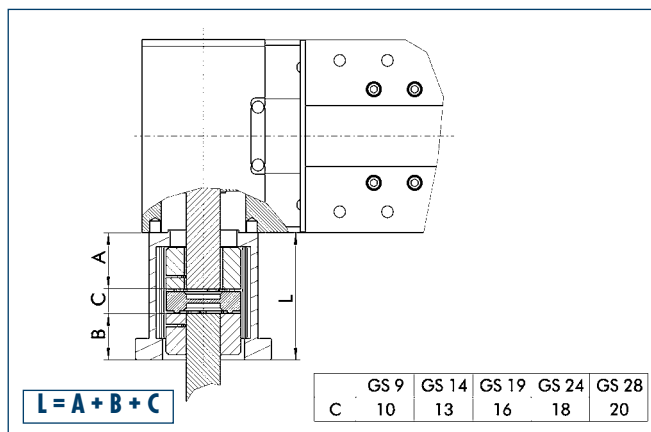
13 Mounting strip

90 T-nut on base side

The profile can be secured either using T-nuts or mounting strips.

Designation	Order designation	ID no.
T-nut	NS2	0331405
T-nut	RM2	0331425
Mounting strip	BL1	0331400

Motor flange schematic diagram



The table shows the relevant dimension C of the standard couplings.

For dimension A refer to drive journal connection dimensions, for dimension B refer to corresponding motor dimension sheet, dimension L may differ in individual cases.

Different drive solutions can be attached to our axes.

SCHUNK can supply you with the right motor flange and coupling for your drive.

ⓘ Because of the different thermal behavior of motors, we recommend that the drive solution is tested by the motor manufacturer.

More detailed information on pedestal bearings, connection shafts and bevel gears can be found in the "OPTIONS for System HSB" section of the catalog.