

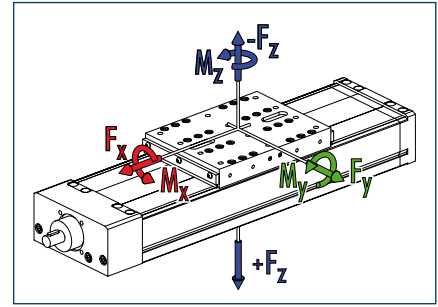
Advantages of profiled rail guide

High load bearing capacity

Long lifetime

High precision

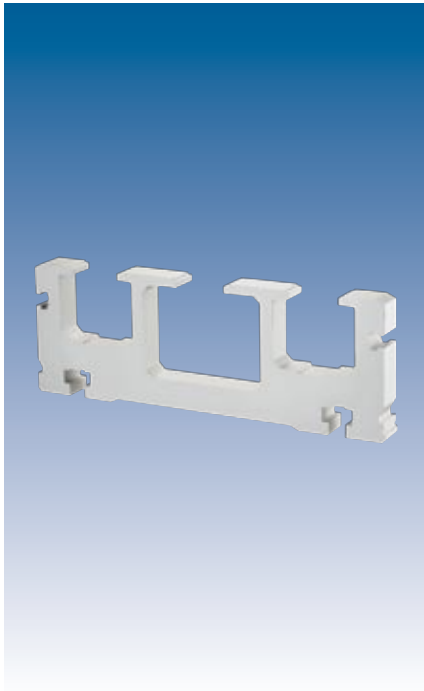
Loads and load torques



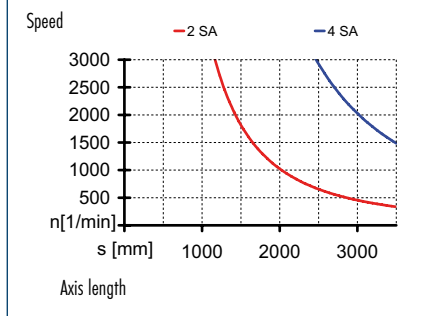
Load	Dynamic
F_x^{**} [N]	12000
F_y [N]	6000
F_z [N]	12000
$-F_z$ [N]	8000
Load torques	Dynamic
M_x [Nm]	4500
M_y [Nm]	6000 (8500)
M_z [Nm]	1500 (6400)
M_{Amax} [Nm]	12.3 (p=5)
	21.9 (p=10)
	41.0 (p=20)
	79.2 (p=40)

** Depends on speed and pitch n_{max}
 KGT = 3000 rpm; TGT = 1500 rpm

① Values in brackets relate to the long slide.



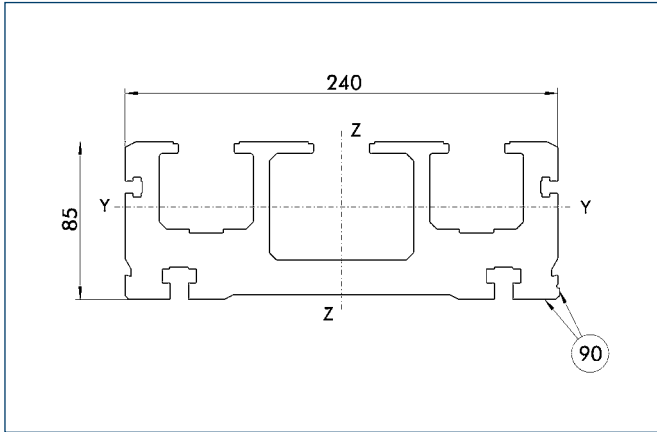
Spindle supports SA



Technical data

Designation		D 240-SSS
Max. travel speed	[m/s]	2.0
Repeat accuracy	[mm]	± 0.03
Max. acceleration	[m/s ²]	20
Idle torque	[Nm]	2.8
Maximum stroke	[mm]	2600
Max. total length	[mm]	3000
Moment of inertia	[kgm ²]	0.000645
Drive element		Ball screw spindle drive
Max. spindle speed	[rpm]	3000
Diameter	[mm]	32
Pitch	[mm]	5 / 10 / 20 / 40
Drive element		Trapezoidal threaded drive
Max. spindle speed	[rpm]	1500
Diameter	[mm]	32
Pitch	[mm]	6
Weights		
Basic without travel	[kg]	26.0
Travel per 100 mm	[kg]	3.4
Slide plate 280 mm	[kg]	10.2
Slide plate 400 mm	[kg]	14.6

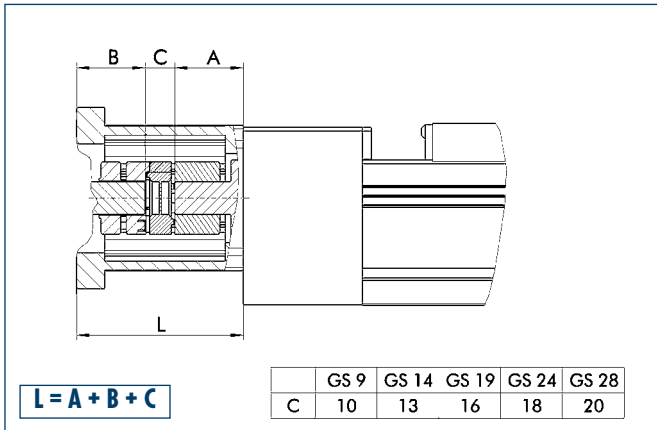
Profile SSS



90 Stop angle standard side

Specific mass	[kg/m]	27.2
Planar dimension	[mm ²]	10074
Planar moment of inertia I _y	[mm ⁴]	6382473
Planar moment of inertia I _z	[mm ⁴]	61720897
Load torque W _y	[mm ³]	119554
Load torque W _z	[mm ³]	511233

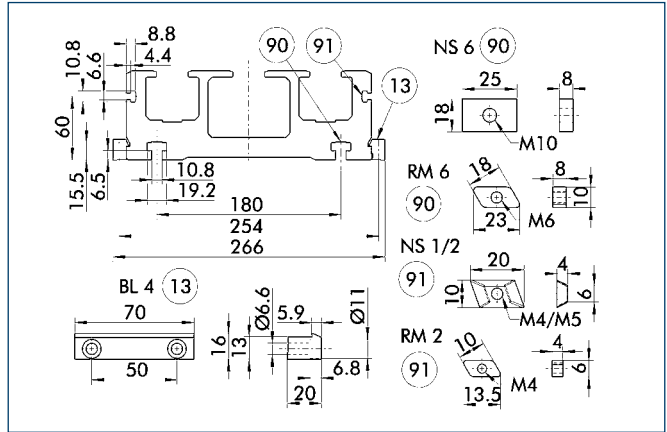
Motor flange schematic diagram



The table shows the relevant dimension **C** of the standard couplings. For dimension **A** refer to drive journal connection dimensions, for dimension **B** refer to corresponding motor dimension sheet, dimension **L** may differ in individual cases. Different drive solutions can be attached to our axes. SCHUNK can supply you with the right motor flange and coupling for your drive.

① Because of the different thermal behavior of motors, we recommend that the drive solution is tested by the motor manufacturer.

Mounting



13 Mounting strip

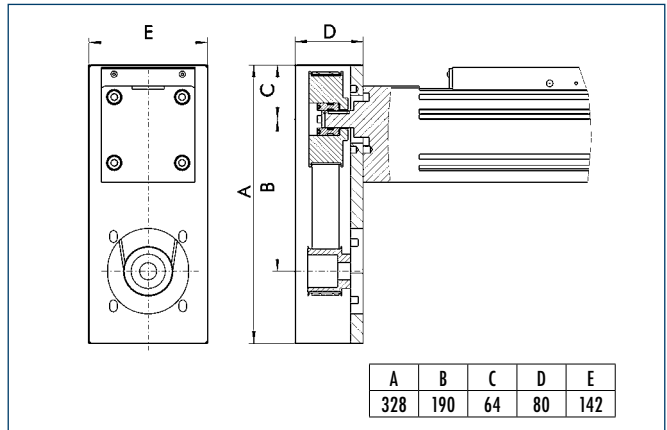
90 T-nut on base side

91 Side T-nut

The profile can be secured either using T-nuts or mounting strips.

Designation	Order designation	ID no.
T-nut	NS1	0331404
T-nut	NS2	0331405
T-nut	NS6	0331409
T-nut	RM2	0331425
T-nut	RM6	0331427
Mounting strip	BL4	0331403

Angle gear schematic diagram



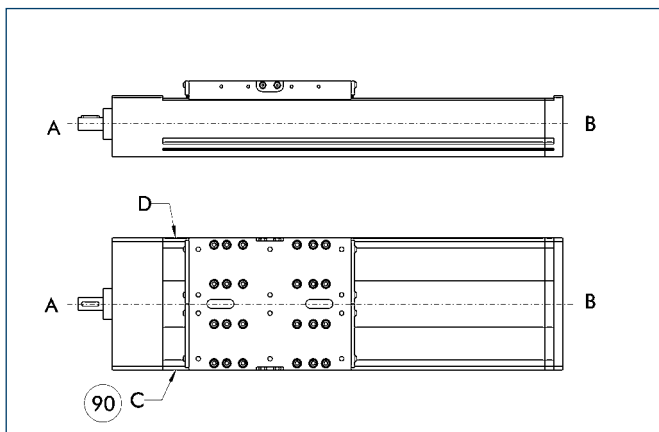
Possible transmission ratios: $i = 1 : 1$, $i = 2 : 1$, $i = 3 : 1$

Caution: Dimension C can change at $i \neq 1:1$ or with smooth motor shafts (without feather key).

Even in tight conditions, different drive solutions can be attached. SCHUNK can provide you with the right angle gear for your drive.

① Because of the different thermal behavior of motors, we recommend that the drive solution is tested by the motor manufacturer.

Limit switch position



90 Limit switch standard position

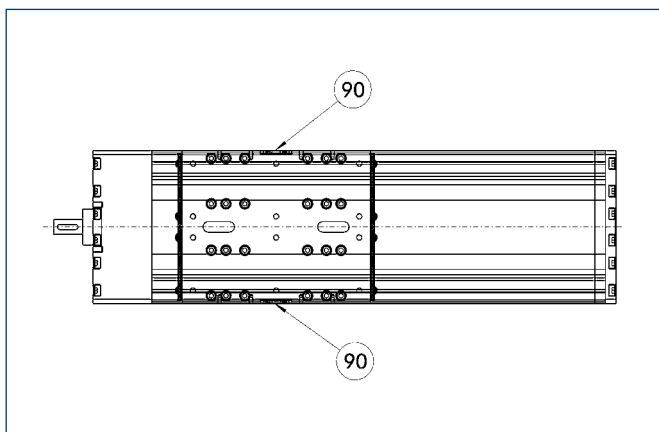
Two E02 switches are used as limit switches and an RS2 as the reference switch as standard.

① The positions and dimensions of limit switches, switching lugs, and mounting components may vary depending on the application and the selected limit switches. Please contact us for assistance.

Limit switch selection

Designation	Order designation	ID no.
Inductive limit switch, opener, 2 m cable	E02	0331410
Inductive limit switch, opener, 10 m cable	E010	0331412
Inductive limit switch, closer, 2 m cable	ES2	0331411
Inductive limit switch, closer, 10 m cable	ES10	0331413
Mechanical limit switch (Siemens), opener	EMS	0331414
Mechanical limit switch (Balluff), opener	EMB	0331415

Lubrication connections



90 Standard lubrication connection

Standard connection

Lubrication nipple M8x1

If the lubrication connection has a different seat, this must be defined in the order text.

More detailed information on pedestal bearings, connection shafts and bevel gears can be found in the "OPTIONS for System HSB" section of the catalog.