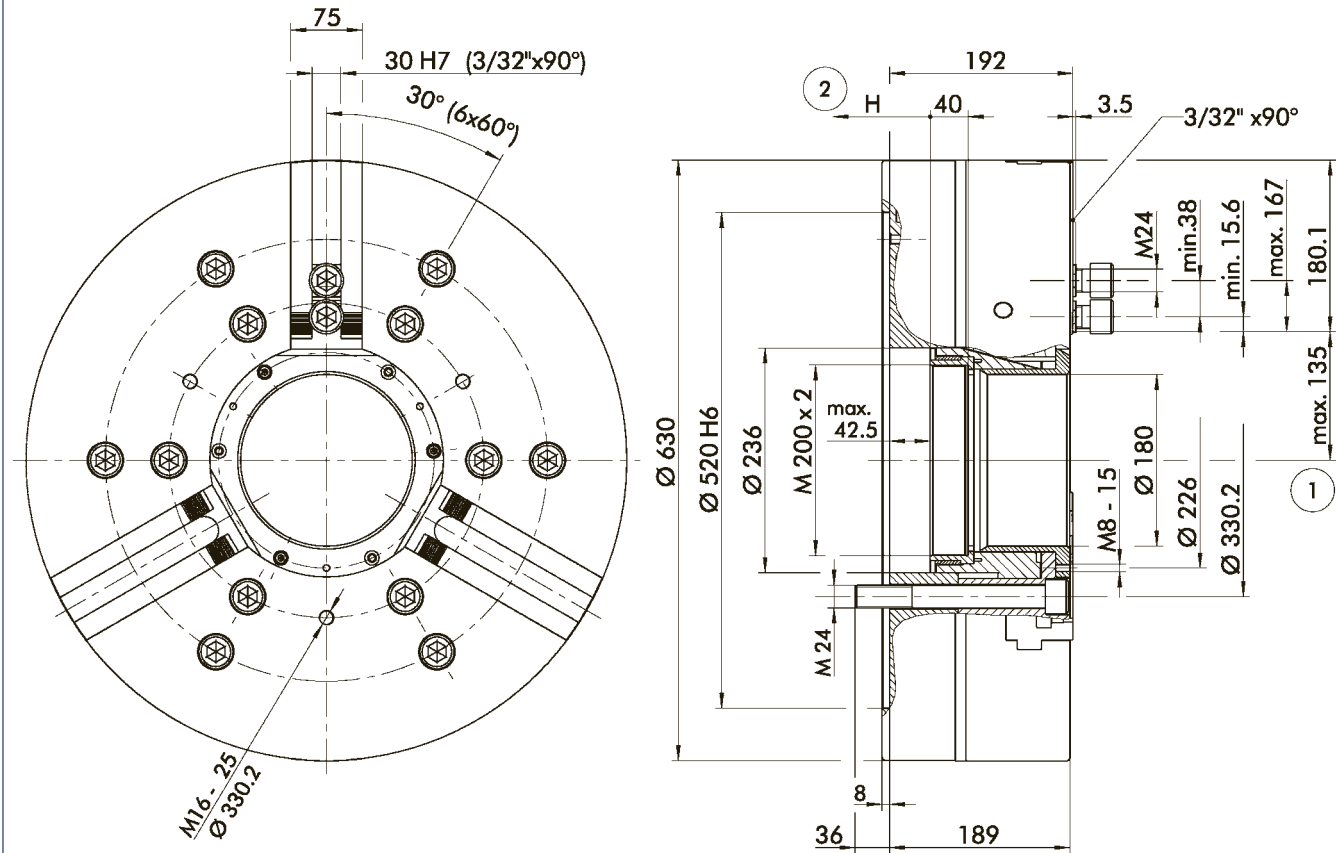


DIN 6353 Z 520



Futter für Wellenspannung in geöffneter Stellung dargestellt  
Technische Änderungen vorbehalten

Chuck in open position  
Subject to technical changes

- ① Abstand auf 1. Zahngrund
- ② Richtung des Kolbenhubes

- ① Distance to 1st. tooth depth
- ② Piston stroke direction

Technische Daten

Technical data

Spindel Spindle		Verzahnung Serration	Max. Betätigungskraft Max. actuating force	Max. Spannkraft Max. clamping force	Max. Drehzahl Max. RPM	Hub/Backe Stroke/Jaw	Kolbenhub (H) Piston stroke (H)	Trägheitsmoment Moment of inertia	Gewicht Weight	
ID			[kN]	[kN]	[min <sup>-1</sup> ]	[mm]	[mm]	[kgm <sup>2</sup> ]	[kg]	
DIN 6353	Z520	0852060	3/32" x 90°	122.0	260.0	1800	11.2	42.0	19.8	365.0

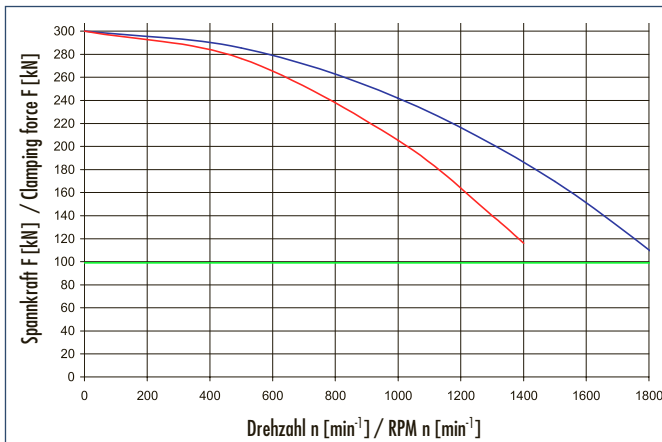
Lieferumfang

Futter, Nutensteine mit Schrauben, Futter-Befestigungsschrauben, Montageschlüssel für drehbaren Gewinding, Ringschraube und Betriebsanleitung

Scope of delivery

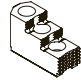
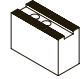
Chuck, T-nuts with screws, chuck mounting bolts, mounting wrench for turnable ring, eye bolt and operating manual

Spannkraft-Drehzahl-Diagramm



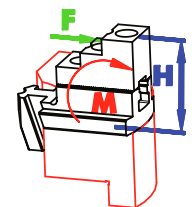
① siehe Seite 545

Clamping force-RPM-diagram

■ Restspannkraft/Residual clamp. force 33 %		
■ SP-HB 630		16.2 kg
■ SP-WB 630		32.9 kg

① see page 545

Führungsbahnbelastung  
Load of base jaw guidance



M<sub>max</sub> = 7367 Nm

① siehe Seite 546

① see page 546

Spannbereiche

① siehe Seite 219/223

Clamping ranges

① see page 219/223



**Spezialfett**  
siehe Kapitel Zubehör

**Special grease**  
see chapter accessories



**Standardbacken**  
siehe Seite 216

**Standard chuck jaws**  
see page 216



**Flansche**  
siehe Seite 486

**Adapter plates**  
see page 486

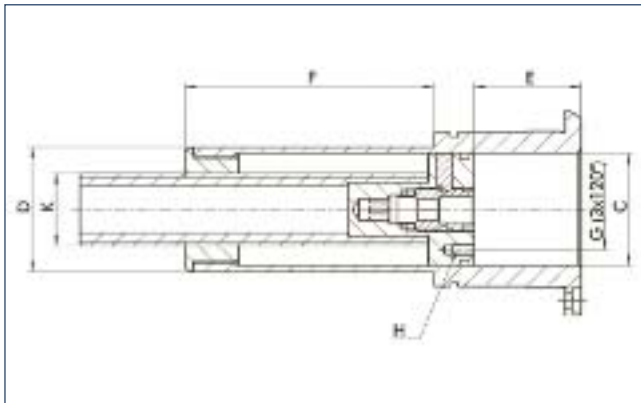


**Spannkraftmessgerät**  
siehe Kapitel Zubehör

**Gripping force tester**  
see chapter accessories

Schutzbüchsen für NCF plus/NC plus · Center Sleeves for NCF plus/NC plus

Schutzbüchsen mit verstellbarem Anschlag



Center sleeves with adjustable stop



Technische Daten

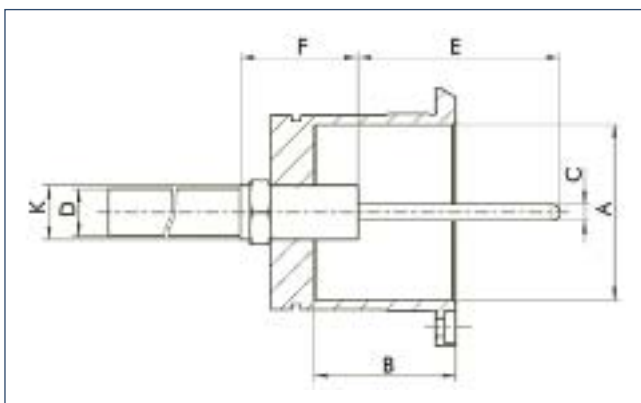
	ID	Ø C [mm]	Ø D [mm]	E <sub>min</sub> [mm]	E <sub>max</sub> [mm]	F [mm]	Ø G [mm]	H	K
ROTA NC plus 185	8703859	42	46.5	0	110.8	92.8	30	M4x8	M27
ROTA NC plus 215	8703749	51	55.5	0	110.8	97.8	35	M5x10	M27
ROTA NC plus 260	8703839	61	65.5	0	110.8	96.8	40	M5x10	M27
ROTA NC plus 315	8703816	75	80.5	0	110.8	104.8	50	M6x12	M27

Technical data

ⓘ Bitte Spindeldurchlass prüfen! Dieser muss mindestens  $\varnothing D + 0.5$  mm betragen.

ⓘ Please check the spindle through hole! It has to be at least  $\varnothing D + 0.5$  mm.

Schutzbüchsen mit Auswerfer



Center sleeves with part ejector



Technische Daten

	ID	Ø A [mm]	B [mm]	Ø C [mm]	Ø D [mm]	E <sub>min</sub> [mm]	E <sub>max</sub> [mm]	F [mm]	K
ROTA NC plus 185	8703861	52	42	4.8	14	10	100	35	M16x1.5
ROTA NC plus 215	8703751	66	37	4.8	14	10	100	35	M16x1.5
ROTA NC plus 260	8703841	86	38	4.8	14	10	100	35	M16x1.5
ROTA NC plus 315	8703818	104	44	4.8	14	10	100	35	M16x1.5

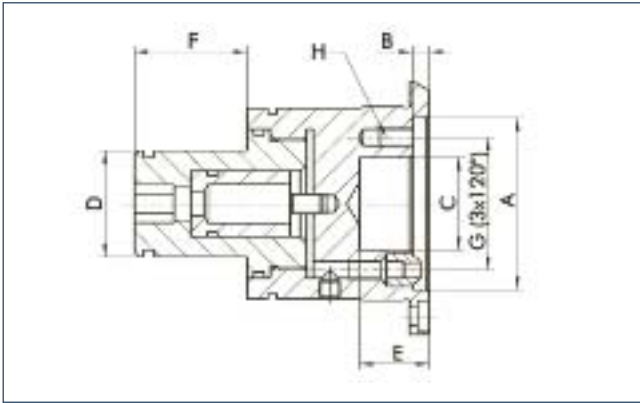
Technical data

ⓘ Der Auswerferhub ist in 10er-Schritten von 10 – 100 mm wählbar  
 ⓘ Die Auswerferkraft ist von 35 – 300 N wählbar

ⓘ The ejector stroke is selectable in increments of 10 from 10 – 100 mm  
 ⓘ The ejector force can be selected from 35 – 300 N

Schutzbüchsen mit Spritzdüsen

Center sleeves with coolant nozzles



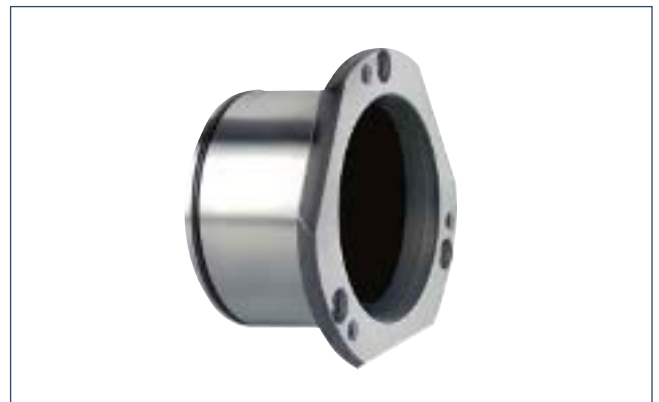
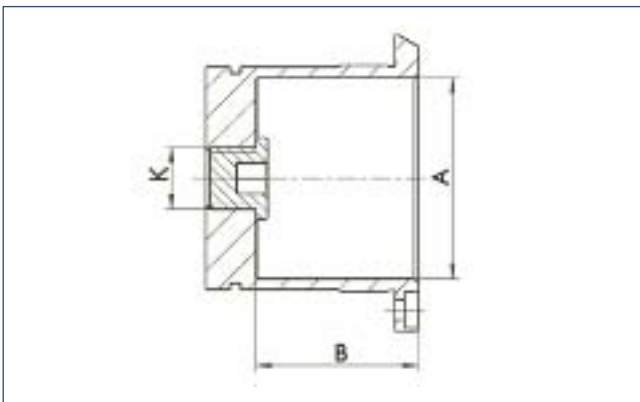
Technische Daten

Technical data

	ID	Ø A [mm]	B [mm]	Ø C [mm]	Ø D [mm]	E [mm]	F [mm]	Ø G [mm]	H
ROTA NC plus 185	8703863	52	5	28	32	21	34	41	M6x10
ROTA NC plus 215	8703753	66	5	32	32	17	47	49	M6x10
ROTA NC plus 260	8703843	86	5	48	32	16	47	67	M6x10
ROTA NC plus 315	8703820	104	5	48	32	21	47	76	M6x10

Schutzbüchsen geschlossen

Center sleeves closed



Technische Daten

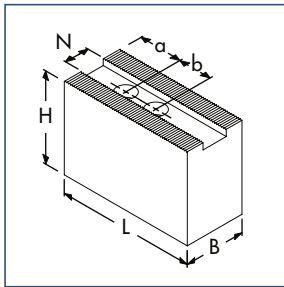
Technical data

	ID	Ø A [mm]	B [mm]	K
ROTA NC plus 185	8703865	52	42	M16x1.5
ROTA NC plus 215	8703755	66	37	M16x1.5
ROTA NC plus 260	8703845	86	38	M16x1.5
ROTA NC plus 315	8703822	104	44	M16x1.5

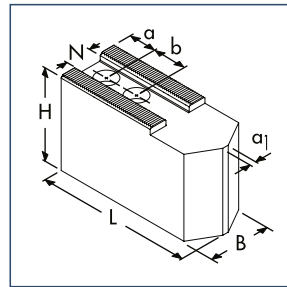
**Aufsatzbacken Spitzverzahnung 60° · Top Jaws Fine Serration 60°**

**KM-WB, KM-WBL, KM-WBAL und SHB-J**  
für ROTA NC plus 185 bis 315 und ROTA NC 400

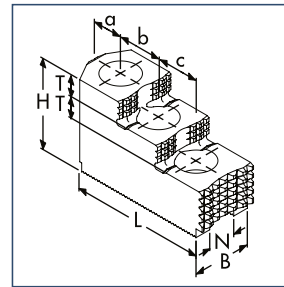
**KM-WB, KM-WBL, KM-WBAL and SHB-J**  
for ROTA NC plus 185 up to 315 and ROTA NC 400



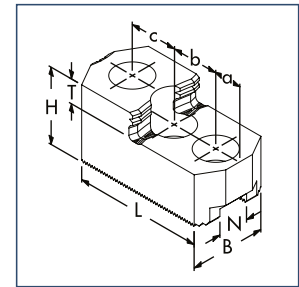
Aufsatzbacken weich, KM-WB und KM-WBAL  
Soft top jaws, KM-WB and KM-WBAL



Aufsatzbacken weich, KM-WBL  
Soft top jaws, KM-WBL



Aufsatzbacken hart, SHB-J  
Hard top jaws, SHB-J



Aufsatzbacken hart, SHB-J 60  
Hard top jaws, Type SHB-J 60

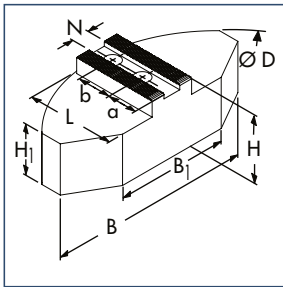
**Technische Daten**

**Technical data**

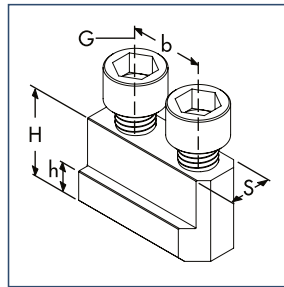
Futtertype Chuck type	Bezeichnung Description	ID	Material	N	B	H	L	a	b	c	T	α <sub>1</sub>	Schrauben Screws	Satz Set	
				[mm]	[mm]	[mm]	[mm]	[mm]	[mm]	[mm]	[mm]	[mm]		[kg]	
ROTA NC plus 185	KM-WB 66	0132138	16MnCr5	12.0	32.0	32.0	72.0	15.0	20.0				M10	1.4	
	KM-WB 61	0130128	16MnCr5	12.0	35.0	60.0	72.0	15.0	20.0				M10	2.9	
	KM-WBL 60	0132600	16MnCr5	12.0	32.0	32.0	82.0	15.0	20.0			4.0	M10	1.5	
	KM-WBL 62	0132606	16MnCr5	12.0	35.0	60.0	82.0	15.0	20.0			4.0	M10	3.6	
	KM-WBAL 70	0132521	ALU	12.0	35.0	50.0	72.0	15.0	20.0				M10	0.9	
	SHB-J 60	0133100	hart/hard	12.0	28.0	36.0	67.0	13.0	20.0	20.0	12.0		M10	0.8	
ROTA NC plus 215	KM-WB 88	0132139	16MnCr5	14.0	35.0	40.0	95.0	24.0	25.0				M12	2.7	
	KM-WB 84	0132126	16MnCr5	14.0	35.0	60.0	95.0	24.0	25.0				M12	3.9	
	KM-WB 85	0132127	16MnCr5	14.0	40.0	80.0	95.0	24.0	25.0				M12	6.1	
	KM-WBL 80	0132601	16MnCr5	14.0	35.0	40.0	102.0	20.0	25.0			4.0	M12	2.7	
	KM-WBL 81	0132607	16MnCr5	14.0	40.0	80.0	102.0	20.0	25.0			4.0	M12	6.0	
	KM-WBL 82	0132615	16MnCr5	14.0	40.0	100.0	100.0	20.0	25.0			4.0	M12	7.6	
	KM-WBAL 80	0132522	ALU	14.0	40.0	60.0	90.0	20.0	25.0				M12	1.5	
	SHB-J 80	0133109	hart/hard	14.0	35.0	51.0	87.0	15.5	25.0	25.0	12.0		M12	1.85	
ROTA NC plus 260	KM-WB 110	0132140	16MnCr5	16.0	40.0	42.0	110.0	30.0	30.0				M12	3.8	
	KM-WB 111	0132147	16MnCr5	16.0	50.0	50.0	120.0	30.0	30.0				M12	6.2	
	KM-WB 102	0132104	16MnCr5	16.0	40.0	60.0	90.0	15.0	30.0				M12	4.3	
	KM-WB 103	0132105	16MnCr5	16.0	40.0	60.0	110.0	30.0	30.0				M12	5.2	
	KM-WB 104	0132106	16MnCr5	16.0	50.0	80.0	90.0	15.0	30.0				M12	7.3	
	KM-WB 105	0132129	16MnCr5	16.0	40.0	80.0	110.0	30.0	30.0				M12	7.2	
	KM-WB 106	0132152	16MnCr5	16.0	40.0	100.0	120.0	30.0	30.0				M12	9.9	
	KM-WBL 100	0132602	16MnCr5	16.0	40.0	42.0	125.0	30.0	30.0			4.0	M12	4.1	
	KM-WBL 103	0132609	16MnCr5	16.0	40.0	60.0	125.0	30.0	30.0			4.0	M12	5.7	
	KM-WBL 101	0132608	16MnCr5	16.0	40.0	100.0	125.0	30.0	30.0			4.0	M12	9.8	
	KM-WBAL 100	0132523	ALU	16.0	40.0	60.0	110.0	25.0	30.0				M12	1.9	
	SHB-J 100	0133111	hart/hard	16.0	40.0	54.0	101.5	25.5	30.0	30.0	13.0		M12	2.8	
	ROTA NC plus 315	KM-WB 126	0132131	16MnCr5	21.0	50.0	60.0	129.0	39.0	30.0				M16	7.8
		KM-WB 128	0132154	16MnCr5	21.0	50.0	80.0	129.0	39.0	30.0				M16	10.4
KM-WB 127		0132148	16MnCr5	21.0	50.0	100.0	140.0	30.0	30.0				M16	13.8	
KM-WBL 121		0132604	16MnCr5	21.0	50.0	50.0	145.0	30.0	30.0			10.0	M16	6.9	
KM-WBL 125		0132618	16MnCr5	21.0	50.0	100.0	145.0	30.0	30.0			10.0	M16	14.2	
KM-WBAL 121		0132525	ALU	21.0	50.0	80.0	130.0	40.0	30.0				M16	3.8	
ROTA NC 400	SHB-J 126	0133105	hart/hard	21.0	50.0	62.0	128.0	22.0	30.0	30.0	14.0		M16	5.15	
	KM-WB 153	0132132	16MnCr5	22.0	60.0	80.0	165.0	37.0	43.0				M20	16.1	
	KM-WB 155	0132156	16MnCr5	22.0	60.0	120.0	165.0	37.0	43.0				M20	24.2	
	KM-WBL 150	0132605	16MnCr5	22.0	60.0	60.0	185.0	30.0	43.0			10.0	M20	12.6	
	KM-WBAL 150	0132526	ALU	22.0	60.0	80.0	145.0	40.0	43.0				M20	5.1	
SHB-J 150	0133114	hart/hard	22.0	60.0	86.0	143.0	23.5	43.0	43.0	20.0		M20	9.0		

**KMWB-SM, KMWB-SA und NJ**  
für ROTA NC plus 185 bis 315 und ROTA NC 400

**KMWB-SM, KMWB-SA and NJ**  
for ROTA NC plus 185 up to 315 and ROTA NC 400



Segmentbacken weich, KMWB-SM und KMWB-SA  
Soft full grip jaws, KMWB-SM and KMWB-SA



Nutensteine, NJ  
T-nuts, NJ

**Technische Daten – Segmentbacken**

**Technical data – Full grip jaws**

Futtertype Chuck type	Bezeichnung Description	ID	Material	N [mm]	B [mm]	B <sub>1</sub> [mm]	H [mm]	H <sub>1</sub> [mm]	L [mm]	D [mm]	a [mm]	b [mm]	Schrauben Screws	Satz Set [kg]
ROTA NC plus 185	KMWB-SM 165	0132700	16MnCr5	12.0	120.0	50.0	50.0	40.0	60.0	160.0	25.0	20.0	M10	4.9
	KMWB-SA 165	0132800	ALU	12.0	120.0	40.0	58.0	48.0	59.5	165.0	25.0	20.0	M10	2.2
ROTA NC plus 215	KMWB-SM 210	0132701	16MnCr5	14.0	140.0	70.0	60.0	50.0	70.0	200.0	30.0	25.0	M12	8.8
	KMWB-SM 211	0132705	16MnCr5	14.0	140.0	70.0	80.0	70.0	70.0	200.0	30.0	25.0	M12	11.7
	KMWB-SA 210	0132801	ALU	14.0	140.0	50.0	58.0	48.0	72.5	200.0	35.0	25.0	M12	3.3
ROTA NC plus 260	KMWB-SA 211	0132805	ALU	14.0	140.0	50.0	80.0	70.0	72.5	200.0	35.0	25.0	M12	4.5
	KMWB-SM 250	0132702	16MnCr5	16.0	180.0	100.0	60.0	45.0	80.0	250.0	30.0	30.0	M12	12.0
	KMWB-SM 251	0132706	16MnCr5	16.0	180.0	100.0	80.0	70.0	80.0	250.0	30.0	30.0	M12	18.5
ROTA NC plus 315	KMWB-SA 250	0132802	ALU	16.0	180.0	70.0	58.0	43.0	87.5	250.0	40.0	30.0	M12	4.7
	KMWB-SA 251	0132806	ALU	16.0	180.0	70.0	80.0	65.0	87.5	250.0	40.0	30.0	M12	6.6
	KMWB-SM 301	0132704	16MnCr5	21.0	240.0	120.0	70.0	55.0	110.0	300.0	45.0	30.0	M16	26.4
ROTA NC 400	KMWB-SA 301	0132804	ALU	21.0	240.0	80.0	78.0	63.0	117.0	320.0	45.0	30.0	M16	10.9

**Technische Daten – Nutensteine**

**Technical data – T-nuts**

Futtertype Chuck type	Bezeichnung Description	ID	S [mm]	H [mm]	h [mm]	b [mm]	Gewinde Thread	Schrauben Screws	Max. zul. Anziehdrehmoment Max. adm. tightening torque [Nm]
ROTA NC plus 185	NJ 62	0146133	12.0	18.5	7.5	20.0	M10	M10x25	50.0
ROTA NC plus 215	NJ 82	0146131	14.0	20.5	8.5	25.0	M12	M12x30	70.0
ROTA NC plus 260	NJ 103	0146132	16.0	21.5	8.5	30.0	M12	M12x30	70.0
ROTA NC plus 315	NJ 124	0146123	21.0	28.0	11.5	30.0	M16	M16x40	150.0
ROTA NC 400	NJ 152	0146125	24.0	45.5	16.5	43.0	M20	M20x60	300.0

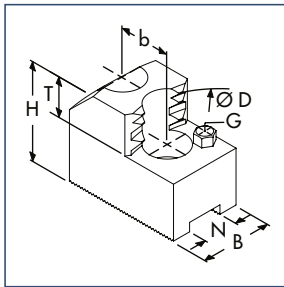
**SCHUNK Sonder- und Spezialbacken**  
siehe Seite 514 – 539

**SCHUNK special and specialized jaws**  
see page 514 – 539

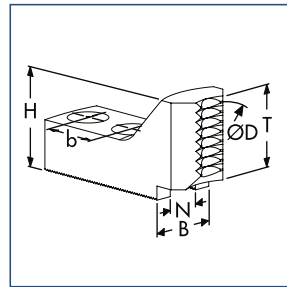
**Krallenbacken Spitzverzahnung 60° • Claw Jaws Fine Serration 60°**

**SZAJ und SZAJ-ST für Außenspannung**  
für ROTA NC plus 185 bis 315 und ROTA NC 400

**SZAJ and SZAJ-ST for O.D.-Clamping**  
for ROTA NC plus 185 up to 315 and ROTA NC 400



Krallenbacken hart, SZAJ  
Hard claw jaws, SZAJ



Krallenbacken hart, SZAJ-ST  
Hard claw jaws, SZAJ-ST



Auflagebolzen  
Workpiece stops

**Technische Daten**

**Technical data**

Futtertype Chuck type	Bezeichnung Description	ID	Spannbereich Clamping range [mm]	Schwingkreis Swing diameter [mm]	N [mm]	B [mm]	H [mm]	T [mm]	G	b [mm]	Satz Set [kg]
ROTA NC plus 185	SZAJ 16-6	0176100	42 - 75	197	12.0	30.0	47.0	20.0	M6	20.0	1.2
	SZAJ 16-8	0176102	74 - 108	197	12.0	30.0	47.0	20.0	M6	20.0	1.1
	SZAJ 16-10	0176104	104 - 137	197	12.0	40.0	47.0	20.0	M6	20.0	1.2
	SZAJ-ST 16-2	0175501	28 - 57	197	12.0	30.0	40.0	34.0		20.0	1.1
ROTA NC plus 215	SZAJ 20-1	0138110	48 - 79	226	14.0	35.0	53.0	25.0	M6	25.0	1.9
	SZAJ 20-2	0138112	75 - 107	226	14.0	35.0	53.0	25.0	M6	25.0	1.6
	SZAJ 20-3	0138114	106 - 137	226	14.0	40.0	53.0	25.0	M6	25.0	1.7
	SZAJ 20-4	0138116	136 - 168	226	14.0	40.0	53.0	25.0	M6	25.0	1.6
	SZAJ 20-16	0138143	158 - 190	246	14.0	40.0	53.0	25.0	M6	25.0	1.7
	SZAJ-ST 20-2	0175503	29 - 58	230	14.0	35.0	45.0	39.0		25.0	1.8
ROTA NC plus 260	SZAJ 25-1	0138117	52 - 101	278	16.0	40.0	58.0	25.0	M6	30.0	2.9
	SZAJ 25-2	0138119	93 - 143	278	16.0	40.0	58.0	25.0	M6	30.0	2.3
	SZAJ 25-3	0138121	137 - 187	282	16.0	40.0	58.0	25.0	M6	30.0	2.1
	SZAJ 25-4	0138123	182 - 233	298	16.0	40.0	58.0	25.0	M6	30.0	2.3
	SZAJ 25-15	0138118	217 - 268	330	16.0	40.0	58.0	25.0	M8	30.0	2.8
	SZAJ-ST 25-3	0175508	32 - 79	278	16.0	40.0	50.0	44.0		30.0	2.5
	SZAJ 25-16	0138115	217 - 268	330	16.0	40.0	58.0	25.0	M8	30.0	2.8
ROTA NC plus 315	SZAJ 30-5	0138131	60 - 133	345	21.0	50.0	65.0	25.0	M8	30.0	3.8
	SZAJ 30-6	0138132	120 - 193	359	21.0	50.0	65.0	25.0	M8	30.0	4.1
	SZAJ 30-7	0138133	185 - 259	350	21.0	50.0	65.0	25.0	M8	30.0	3.4
	SZAJ 30-8	0138134	250 - 324	395	21.0	50.0	65.0	25.0	M8	30.0	4.8
	SZAJ-ST 30-3	0175512	46 - 106	329	21.0	50.0	50.0	44.0		30.0	3.4
	SZAJ 30-16	0138130	217 - 268	330	21.0	50.0	65.0	25.0	M8	30.0	2.8
ROTA NC 400	SZAJ 38-1	0138135	62 - 162	446	22.0	60.0	85.0	33.0	M8	43.0	10.2
	SZAJ 38-2	0138136	118 - 220	452	22.0	60.0	85.0	33.0	M8	43.0	9.0
	SZAJ 38-3	0138137	178 - 280	452	22.0	60.0	85.0	33.0	M8	43.0	7.5
	SZAJ 38-4	0138138	239 - 341	473	22.0	60.0	85.0	33.0	M8	43.0	7.5
	SZAJ 38-5	0138139	299 - 400	489	22.0	60.0	85.0	33.0	M8	43.0	8.2

- ① Krallenbacken für Innenspannung sowie die Auflagebolzen finden Sie in unserem Spannbackenkatalog
- ② SZAJ 16-6 bis -10 hat zwei Zahnreihen

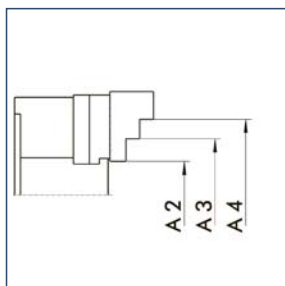
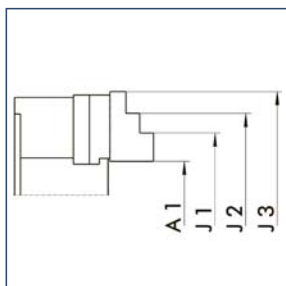
- ① Claw jaws for I.D.-Clamping as well as workpiece stops see our chuck jaws catalog
- ② SZAJ 16-6 up to -10 has two rows of teeth

**SCHUNK Sonder- und Spezialbacken**  
siehe Seite 514 – 539

**SCHUNK special and specialized jaws**  
see page 514 – 539

**mit Stufenaufsatzbacken SHB-J**  
für ROTA NC plus 185 bis 315 und ROTA NC 400

**with hard stepped top jaws SHB-J**  
for ROTA NC plus 185 up to 315 and ROTA NC 400



**Außenspannung**

**O.D.-Clamping**

Futtertype Chuck type	Bezeichnung Description	ID	A1 [mm]	A2 [mm]	A3 [mm]	A4 [mm]
ROTA NC plus 185	SHB-J 60	0133100	41 - 98	-	-	178 - 123
ROTA NC plus 215	SHB-J 80	0133109	43 - 108	38 - 101	100 - 164	214 - 150
ROTA NC plus 260	SHB-J 100	0133111	48 - 125	54 - 135	140 - 222	255 - 174
ROTA NC plus 315	SHB-J 126	0133105	40 - 138	66 - 162	158 - 255	347 - 250
ROTA NC 400	SHB-J 150	0133114	81 - 213	83 - 209	208 - 335	400 - 274

**Innenspannung**

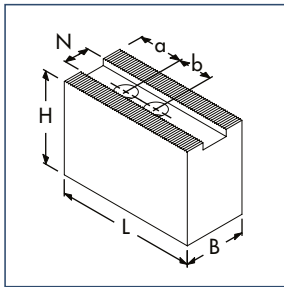
**I.D.-Clamping**

Futtertype Chuck type	Bezeichnung Description	ID	J1 [mm]	J2 [mm]	J3 [mm]
ROTA NC plus 185	SHB-J 60	0133100	100 - 156	-	-
ROTA NC plus 215	SHB-J 80	0133109	108 - 171	158 - 222	218 - 282
ROTA NC plus 260	SHB-J 100	0133111	135 - 210	168 - 244	251 - 328
ROTA NC plus 315	SHB-J 126	0133105	116 - 210	206 - 302	297 - 394
ROTA NC 400	SHB-J 150	0133114	174 - 304	239 - 373	-

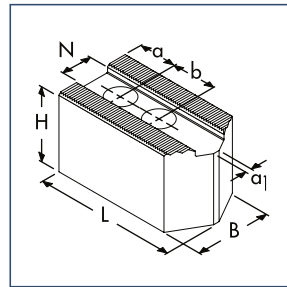
**Aufsatzbacken Spitzverzahnung 90° · Top Jaws Fine Serration 90°**

**SWB, CWB, SWBL, SWB-AL, SHB, SP-WB und SP-HB**  
für ROTA NC plus 185 bis 315 und ROTA NC 400 bis 1000

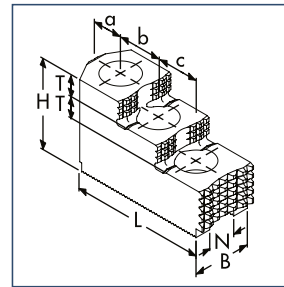
**SWB, CWB, SWBL, SWB-AL, SHB, SP-WB and SP-HB**  
for ROTA NC plus 185 up to 315 and ROTA NC 400 up to 1000



Aufsatzbacken weich, SWB, CWB und SWB-AL  
Soft top jaws, SWB, CWB and SWB-AL



Aufsatzbacken weich, SWBL  
Soft top jaws, SWBL



Aufsatzbacken hart, SHB  
Hard top jaws, SHB

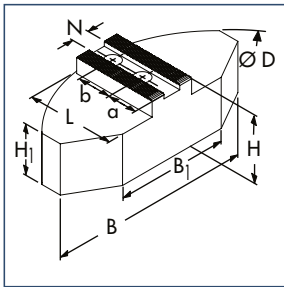
**Technische Daten**

**Technical data**

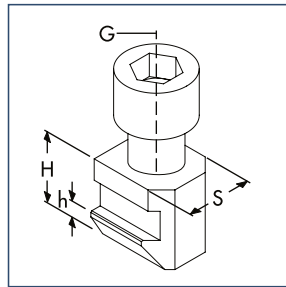
Futtertype Chuck type	Bezeichnung Description	ID	Material	N [mm]	B [mm]	H [mm]	L [mm]	a [mm]	b [mm]	c [mm]	T [mm]	a <sub>1</sub> [mm]	Schrauben Screws	Satz Set [kg]
ROTA NC plus 185	SWB 165	0120101	16MnCr5	14.0	35.0	60.0	68.0	15.0	20.0				M10	2.5
	SWBL 165	0120152	16MnCr5	14.0	35.0	40.0	80.0	15.0	20.0			4.0	M10	2.1
	SWB-AL 165	0168105	ALU	14.0	35.0	60.0	80.0	15.0	20.0				M10	1.2
	SHB 165	0121101	hart/hard	14.0	30.0	46.0	78.0	16.0	22.0	22.0	11.0		M10	1.3
ROTA NC plus 215	SWB 200	0120104	16MnCr5	17.0	40.0	60.0	90.0	25.0	22.0				M12	4.1
	CWB 200	0100006	16MnCr5	17.0	40.0	40.0	90.0	25.0	22.0				M12	2.7
	SWBL 200	0120153	16MnCr5	17.0	35.0	40.0	98.0	15.0	22.0			4.0	M12	2.6
	SWB-AL 200	0168101	ALU	17.0	40.0	60.0	90.0	25.0	22.0				M12	1.5
ROTA NC plus 260	SHB 210	0121102	hart/hard	17.0	40.0	49.0	84.0	29.0	19.0	19.0	12.0		M12	2.0
	SWB 250	0120105	16MnCr5	21.0	50.0	80.0	120.0	30.0	28.0				M16	9.4
	CWB 251	0100012	16MnCr5	21.0	50.0	60.0	95.0	15.0	28.0				M16	5.2
	SWBL 250/21	0120155	16MnCr5	21.0	50.0	50.0	120.0	20.0	28.0			4.0	M16	5.6
ROTA NC plus 315	SWB-AL 250	0168102	ALU	21.0	50.0	80.0	120.0	30.0	28.0				M16	3.0
	SHB 250	0121105	hart/hard	21.0	50.0	58.0	103.5	34.0	25.0	25.0	14.0		M16	3.5
	SWB 250	0120105	16MnCr5	21.0	50.0	80.0	120.0	30.0	28.0				M16	9.4
	CWB 251	0100012	16MnCr5	21.0	50.0	60.0	95.0	15.0	28.0				M16	5.2
ROTA NC plus 400	SWBL 315	0120156	16MnCr5	21.0	50.0	50.0	140.0	30.0	28.0			4.0	M16	6.5
	SWB-AL 250	0168102	ALU	21.0	50.0	80.0	120.0	30.0	28.0				M16	3.0
	SHB 315	0121111	hart/hard	21.0	50.0	58.0	128.0	46.0	30.0	30.0	14.0		M16	4.6
	SWB 400	0120107	16MnCr5	25.5	60.0	90.0	155.0	30.0	35.0				M20	18.3
ROTA NC 500	CWB 400	0100008	16MnCr5	25.5	60.0	80.0	140.0	30.0	35.0				M20	12.6
	SWB-AL 400	0168103	ALU	25.5	60.0	100.0	155.0	30.0	35.0				M20	6.4
	SHB 400	0121107	hart/hard	25.5	60.0	75.0	140.0	53.0	31.0	31.0	18.0		M20	8.0
	SWB 400	0120107	16MnCr5	25.5	60.0	90.0	155.0	30.0	35.0				M20	18.3
ROTA NC 630	CWB 400	0100008	16MnCr5	25.5	60.0	80.0	140.0	30.0	35.0				M20	12.6
	SWB-AL 400	0168103	ALU	25.5	60.0	100.0	155.0	30.0	35.0				M20	6.4
	SHB 400	0121107	hart/hard	25.5	60.0	75.0	140.0	53.0	31.0	31.0	18.0		M20	8.0
	SWB 400	0120107	16MnCr5	25.5	60.0	90.0	155.0	30.0	35.0				M20	18.3
ROTA NC 800	SP-WB 630	0124107	16MnCr5	30.0	75.0	90.0	240.0	42.0	65.0				M24	32.9
	SP-HB 630	0125106	hart/hard	30.0	75.0	80.0	175.0	50.0	50.0	50.0	30.0		M24	16.2
ROTA NC 1000	SP-WB 630	0124107	16MnCr5	30.0	75.0	90.0	240.0	42.0	65.0				M24	32.9
	SP-HB 630	0125106	hart/hard	30.0	75.0	80.0	175.0	50.0	50.0	50.0	30.0		M24	16.2
ROTA NC 1000	SWB-M 800	0120452	16MnCr5	30.0	80.0	110.0	220.0	45.0	50.0				M24	39.0
	SHB-M 800	0121160	hart/hard	30.0	78.0	87.0	190.0	32.0	50.0	50.0	52/37		M24	15.0

**SWB-SM, SWB-SA und NKA, NKS, NK, NS**  
für ROTA NC plus 185 bis 315 und ROTA NC 400 bis 1000

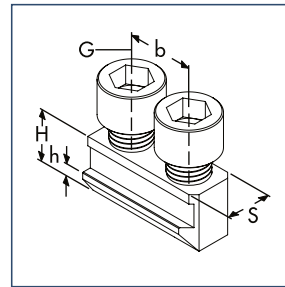
**SWB-SM, SWB-SA and NKA, NKS, NK, NS**  
for ROTA NC plus 185 up to 315 and ROTA NC 400 up to 1000



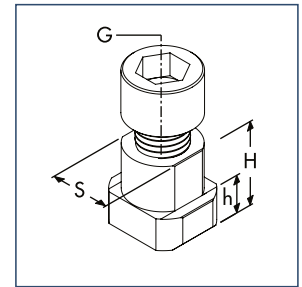
Segmentbacken weich, SWB-SM und SWB-SA  
Soft full grip jaws, SWB-SM and SWB-SA



Nutensteine, NKS  
T-nuts, NKS



Nutensteine, NKA  
T-nuts, NKA



Nutensteine, NS  
T-nuts, NS

**Technische Daten – Segmentbacken**

**Technical data – Full grip jaws**

Futtertype Chuck type	Bezeichnung Description	ID	Material	N	B	B <sub>1</sub>	H	H <sub>1</sub>	L	D	a	b	Schrauben Screws	Satz Set
				[mm]	[mm]	[mm]	[mm]	[mm]	[mm]	[mm]	[mm]	[mm]		[kg]
ROTA NC plus 185	SWB-SM 165	0169099	16MnCr5	14.0	120.0	40.0	60.0	50.0	60.0	160.0	25.0	20.0	M10	5.6
	SWB-SA 165	0170099	ALU	14.0	120.0	40.0	58.0	48.0	59.5	165.0	25.0	20.0	M10	1.9
ROTA NC plus 215	SWB-SM 200	0169101	16MnCr5	17.0	140.0	64.0	60.0	50.0	70.0	200.0	35.0	22.0	M12	8.6
	SWB-SM 201	0169106	16MnCr5	17.0	140.0	64.0	75.0	65.0	70.0	200.0	35.0	22.0	M12	10.8
	SWB-SA 200	0170101	ALU	17.0	140.0	50.0	58.0	48.0	72.5	200.0	35.0	22.0	M12	3.4
ROTA NC plus 260	SWB-SA 201	0170106	ALU	17.0	140.0	50.0	75.0	65.0	72.5	200.0	35.0	22.0	M12	4.2
	SWB-SM 250/21	0169103	16MnCr5	21.0	180.0	104.0	70.0	55.0	80.0	250.0	30.0	28.0	M16	14.0
	SWB-SM 251	0169107	16MnCr5	21.0	180.0	104.0	100.0	85.0	80.0	250.0	30.0	28.0	M16	21.7
ROTA NC plus 315	SWB-SA 250/21	0170103	ALU	21.0	180.0	70.0	78.0	63.0	87.5	250.0	40.0	28.0	M16	7.3
	SWB-SA 251	0170107	ALU	21.0	180.0	70.0	100.0	85.0	87.5	250.0	40.0	28.0	M16	8.3
	SWB-SM 315	0169104	16MnCr5	21.0	240.0	120.0	70.0	55.0	110.0	320.0	60.0	28.0	M16	26.6
ROTA NC 400	SWB-SA 315	0170104	ALU	21.0	240.0	80.0	78.0	63.0	117.0	320.0	70.0	28.0	M16	12.0
	SWB-SM 400	0169105	16MnCr5	25.5	330.0	150.0	85.0	55.0	155.0	440.0	85.0	35.0	M20	55.2
ROTA NC 500	SWB-SA 400	0170105	ALU	25.5	330.0	150.0	98.0	68.0	160.0	440.0	85.0	35.0	M20	26.2
	SWB-SM 400	0169105	16MnCr5	25.5	330.0	150.0	85.0	55.0	155.0	440.0	85.0	35.0	M20	55.2
	SWB-SA 400	0170105	ALU	25.5	330.0	150.0	98.0	68.0	160.0	440.0	85.0	35.0	M20	26.2

**Technische Daten – Nutensteine**

**Technical data – T-nuts**

Futtertype Chuck type	Bezeichnung Description	ID	S	H	h	b	Gewinde Thread	Schrauben Screws	Max. zul. Anziehdrehmoment Max. adm. tightening torque
			[mm]	[mm]	[mm]	[mm]			[Nm]
ROTA NC plus 185	NKA 1	0145103	14.0	18.5	6.5	20.0	M10	M10x25	50.0
	NKS 1	0143104	14.0	18.5	6.5		M10	M10x25	50.0
ROTA NC plus 215	NKA 2	0145104	17.0	20.5	7.5	22.0	M12	M12x25	70.0
	NKS 2	0143106	17.0	20.5	7.5		M12	M12x25	70.0
ROTA NC plus 260	NKA 3	0145105	21.0	26.5	10.0	28.0	M16	M16x35	150.0
	NKS 3	0143107	21.0	26.5	10.0		M16	M16x35	150.0
ROTA NC plus 315	NKA 3	0145105	21.0	26.5	10.0	28.0	M16	M16x35	150.0
	NKS 3	0143107	21.0	26.5	10.0		M16	M16x35	150.0
ROTA NC 400	NK 200	0145102	25.5	29.0	11.0	35.0	M20	M20x40	220.0
	NS 200	0140103	25.5	29.0	11.0		M20	M20x40	220.0
ROTA NC 500	NK 200	0145102	25.5	29.0	11.0	35.0	M20	M20x40	220.0
	NS 200	0140103	25.5	29.0	11.0		M20	M20x40	220.0
ROTA NC 630/800	NS 240-2	0140124	30.0	41.0	15.0		M24	M24x60	450.0
ROTA NC 1000	NS 240	0140104	30.0	41.0	15.0		M24	M24x50	450.0

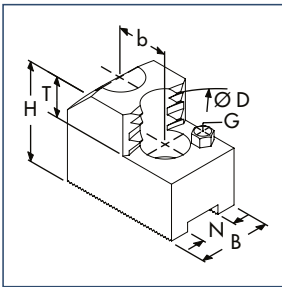
SCHUNK Sonder- und Spezialbacken  
siehe Seite 514 – 539

SCHUNK special and specialized jaws  
see page 514 – 539

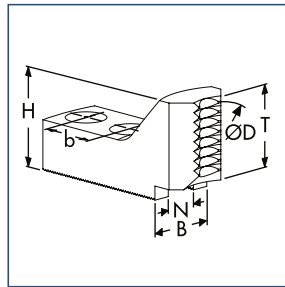
**Krallenbacken Spitzverzahnung 90° · Claw Jaws Fine Serration 90°**

**SZA und SZA-ST für Außenspannung**  
für ROTA NC plus 185 bis 315 und ROTA NC 400 und 500

**SZA and SZA-ST for O.D.-Clamping**  
for ROTA NC plus 185 up to 315 and ROTA NC 400 and 500



Krallenbacken hart, SZA  
Hard claw jaws, SZA



Krallenbacken hart, SZA-ST  
Hard claw jaws, SZA-ST



Auflegebolzen  
Workpiece stops

**Technische Daten**

**Technical data**

Futtertype Chuck type	Bezeichnung Description	ID	Spannbereich Clamping range [mm]	Schwingkreis Swing diameter [mm]	N [mm]	B [mm]	H [mm]	T [mm]	G	b [mm]	Satz Set [kg]
ROTA NC plus 185	SZA 17-1	0122260	41 - 74	197	14.0	30.0	47.0	20.0	M6	20.0	1.2
	SZA 17-2	0122261	63 - 97	199	14.0	30.0	47.0	20.0	M6	20.0	1.0
	SZA 17-3	0122262	90 - 124	200	14.0	30.0	47.0	20.0	M6	20.0	1.0
	SZA 17-4	0122263	115 - 150	208	14.0	35.0	47.0	20.0	M6	20.0	1.2
	SZA-ST 17-1	0175113	26 - 52	195	14.0	30.0	40.0	30.0		20.0	1.0
ROTA NC plus 215	SZA 20-14	0138195	40 - 76	225	17.0	35.0	50.0	25.0	M6	22.0	1.8
	SZA 20-15	0138196	67 - 104	225	17.0	35.0	50.0	25.0	M6	22.0	1.5
	SZA 20-16	0138197	95 - 133	224	17.0	40.0	50.0	25.0	M6	22.0	1.5
	SZA 20-17	0138198	124 - 161	228	17.0	40.0	50.0	25.0	M6	22.0	1.6
	SZA 20-18	0138199	154 - 192	252	17.0	40.0	50.0	25.0	M6	22.0	1.8
	SZA-ST 20-1	0175101	26 - 63	225	17.0	35.0	45.0	35.0		22.0	1.5
ROTA NC plus 260	SZA 25-37	0138180	63 - 104	272	21.0	50.0	58.0	25.0	M8	28.0	3.3
	SZA 25-38	0138181	102 - 144	272	21.0	50.0	58.0	25.0	M8	28.0	2.9
	SZA 25-39	0138182	152 - 193	274	21.0	50.0	58.0	25.0	M8	28.0	2.7
	SZA 25-40	0138183	199 - 240	311	21.0	50.0	58.0	25.0	M8	28.0	3.2
	SZA-ST 25-2	0175103	32 - 73	274	21.0	45.0	50.0	40.0		28.0	2.7
	ROTA NC plus 315	SZA 31-10	0138184	60 - 135	336	21.0	50.0	58.0	25.0	M8	28.0
SZA 31-11		0138185	118 - 192	349	21.0	50.0	58.0	25.0	M8	28.0	3.4
SZA 31-12		0138186	184 - 258	335	21.0	50.0	58.0	25.0	M8	28.0	3.2
SZA 31-13		0138187	248 - 322	395	21.0	50.0	58.0	25.0	M8	28.0	4.5
SZA-ST 31-1		0175104	33 - 96	337	21.0	45.0	50.0	40.0		28.0	3.3
ROTA NC 400		SZA 40-11	0138300	70 - 171	436	25.5	60.0	78.0	33.0	M8	35.0
	SZA 40-13	0138302	145 - 246	472	25.5	60.0	78.0	33.0	M8	35.0	8.0
	SZA 40-14	0138303	229 - 315	452	25.5	60.0	78.0	33.0	M8	35.0	8.0
	SZA 40-15	0138304	299 - 400	493	25.5	60.0	78.0	33.0	M8	35.0	9.3
	SZA-ST 40-1	0175105	30 - 100	438	25.5	60.0	55.0	45.0		35.0	8.0
	ROTA NC 500	SZA 40-12	0138301	103 - 239	581	25.5	60.0	78.0	33.0	M8	35.0
SZA 40-13		0138302	202 - 339	565	25.5	60.0	78.0	33.0	M8	35.0	8.0
SZA 40-14		0138303	286 - 423	545	25.5	60.0	78.0	33.0	M8	35.0	8.0
SZA 40-15		0138304	357 - 494	586	25.5	60.0	78.0	33.0	M8	35.0	9.3
SZA 40-16		0138305	436 - 500	641	25.5	60.0	78.0	33.0	M8	35.0	11.0
SZA-ST 40-1		0175105	69 - 160	500	25.5	60.0	55.0	45.0		35.0	8.0

① Krallenbacken für Innenspannung sowie die Auflagebolzen finden Sie in unserem Spannbackenkatalog

① SZA 17-1 bis -4 hat zwei Zahnreihen

① Claw jaws for I.D.-Clamping as well as workpiece stops see our chuck jaws catalog

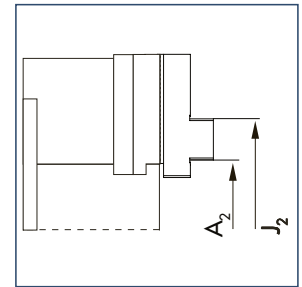
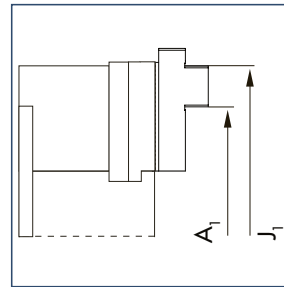
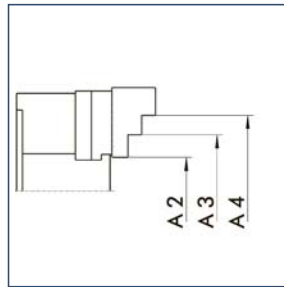
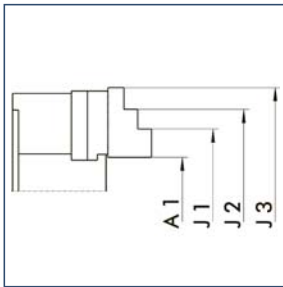
① SZA 17-1 up to -4 has two rows of teeth

SCHUNK Sonder- und Spezialbacken siehe Seite 514 – 539

SCHUNK special and specialized jaws see page 514 – 539

**mit Stufenaufsatzbacken SHB**  
für ROTA NC plus 185 bis 315 und ROTA NC 400 bis 1000

**with hard stepped top jaws SHB**  
for ROTA NC plus 185 up to 315 and ROTA NC 400 up to 1000



**Außenspannung**

**O.D.-Clamping**

Futtertype Chuck type	Bezeichnung Description	ID	A1 [mm]	A2 [mm]	A3 [mm]	A4 [mm]
ROTA NC plus 185	SHB 165	0121101	27 - 81	25 - 88	75 - 138	118 - 182
ROTA NC plus 215	SHB 210	0121102	34 - 99	54 - 118	104 - 168	150 - 215
ROTA NC plus 260	SHB 250	0121105	45 - 120	63 - 137	145 - 220	218 - 293
ROTA NC plus 315	SHB 315	0121111	41 - 138	69 - 168	161 - 261	253 - 353
ROTA NC 400	SHB 400	0121107	60 - 110	100 - 195	205 - 300	310 - 405
ROTA NC 500	SHB 400	0121107	100 - 163	160 - 315	260 - 415	360 - 520
ROTA NC 630	SP-HB 630	0125106	111 - 388	-	142 - 406	345 - 611
ROTA NC 800	SP-HB 630	0125106	160 - 492	-	185 - 522	388 - 727
ROTA NC 1000	SHB-M 800	0121160	438 - 721	635 - 918	-	-

**Innenspannung**

**I.D.-Clamping**

Futtertype Chuck type	Bezeichnung Description	ID	J1 [mm]	J2 [mm]	J3 [mm]
ROTA NC plus 185	SHB 165	0121101	93 - 146	137 - 190	188 - 241
ROTA NC plus 215	SHB 210	0121102	110 - 174	156 - 220	204 - 269
ROTA NC plus 260	SHB 250	0121105	101 - 172	172 - 245	251 - 326
ROTA NC plus 315	SHB 315	0121111	116 - 210	205 - 302	296 - 394
ROTA NC 400	SHB 400	0121107	115 - 215	225 - 350	330 - 425
ROTA NC 500	SHB 400	0121107	165 - 310	270 - 415	375 - 520
ROTA NC 630	SP-HB 630	0125106	258 - 533	459 - 737	-
ROTA NC 800	SP-HB 630	0125106	306 - 637	508 - 842	-
ROTA NC 1000	SHB-M 800	0121160	559 - 842	755 - 1038	-