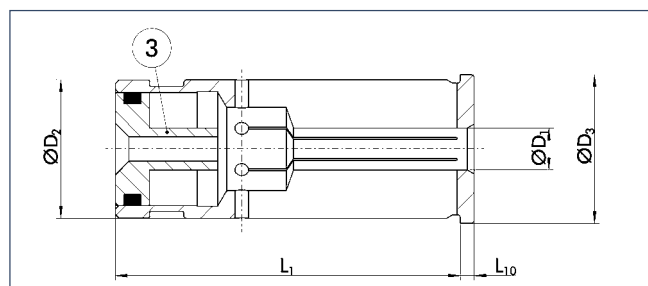


SINO SIN-ZB

for internal coolant supply
suitable for all SINO universal chucks



③ Adjustable limitstop

③ Tope de límite ajustable

SINO SIN-ZB

para suministro de refrigerante interno
apto para todos los chucks universales SINO



Technical data

Datos técnicos

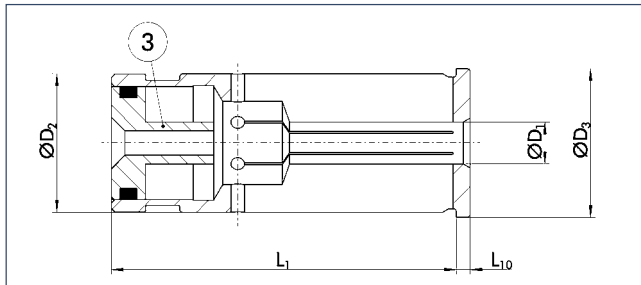
Description			D ₁	D ₂	D ₃	L ₁	L ₁₀	m
Descripción	ID		[inch]	[inch]	[mm]	[mm]	[mm]	[kg]
SINO ZB 1/2"-1/8"	0223380	•	1/8"	1/2"	13.5	45.0	2.0	0.1
SINO ZB 1/2"-3/16"	0223381	•	3/16"	1/2"	13.5	45.0	2.0	0.1
SINO ZB 1/2"-1/4"	0223382	•	1/4"	1/2"	13.5	45.0	2.0	0.1
SINO ZB 1/2"-5/16"	0223383	•	5/16"	1/2"	13.5	45.0	2.0	0.1
SINO ZB 1/2"-3/8"	0223384	•	3/8"	1/2"	13.5	45.0	2.0	0.1
SINO ZB 3/4"-1/4"	0223220	•	1/4"	3/4"	21.5	50.5	2.0	0.1
SINO ZB 3/4"-5/16"	0223221	•	5/16"	3/4"	21.5	50.5	2.0	0.1
SINO ZB 3/4"-3/8"	0223222	•	3/8"	3/4"	21.5	50.5	2.0	0.1
SINO ZB 3/4"-7/16"	0223223	•	7/16"	3/4"	21.5	50.5	2.0	0.1
SINO ZB 3/4"-1/2"	0223224	•	1/2"	3/4"	21.5	50.5	2.0	0.1
SINO ZB 3/4"-9/16"	0223225	•	9/16"	3/4"	21.5	50.5	2.0	0.1
SINO ZB 3/4"-5/8"	0223226	•	5/8"	3/4"	21.5	50.5	2.0	0.1
SINO ZB 1 1/4"-1/4"	0223230	•	1/4"	1 1/4"	33.5	60.5	2.0	0.1
SINO ZB 1 1/4"-3/8"	0223231	•	3/8"	1 1/4"	33.5	60.5	2.0	0.1
SINO ZB 1 1/4"-1/2"	0223232	•	1/2"	1 1/4"	33.5	60.5	2.0	0.1
SINO ZB 1 1/4"-5/8"	0223233	•	5/8"	1 1/4"	33.5	60.5	2.0	0.1
SINO ZB 1 1/4"-3/4"	0223234	•	3/4"	1 1/4"	33.5	60.5	2.0	0.1
SINO ZB 1 1/4"-7/8"	0223235	•	7/8"	1 1/4"	33.5	60.5	2.0	0.1
SINO ZB 1 1/4"-1"	0223236	•	1"	1 1/4"	33.5	60.5	2.0	0.1

• Can be supplied from stock

• Posible suministro de existencia

SINO SIN-ZB

for internal coolant supply
suitable for all SINO universal chucks



③ Adjustable limitstop

③ Tope de límite ajustable

SINO SIN-ZB

para suministro de refrigerante interno
apto para todos los chucks universales SINO

**Technical data****Datos técnicos**

Description			D ₁ *	D ₂	D ₃	L ₁	L ₁₀	m
Descripción	ID		[mm]	[mm]	[mm]	[mm]	[mm]	[kg]
SIN ZB 12-3	0223370	•	3.0	12.0	13.5	45.0	2.0	0.1
SIN ZB 12-4	0223371	•	4.0	12.0	13.5	45.0	2.0	0.1
SIN ZB 12-5	0223372	•	5.0	12.0	13.5	45.0	2.0	0.1
SIN ZB 12-6	0223373	•	6.0	12.0	13.5	45.0	2.0	0.1
SIN ZB 12-8	0223374	•	8.0	12.0	13.5	45.0	2.0	0.1
SIN ZB 20-3	0223197	•	3.0	20.0	21.5	50.5	2.0	0.1
SIN ZB 20-4	0223198	•	4.0	20.0	21.5	50.5	2.0	0.1
SIN ZB 20-5	0223199	•	5.0	20.0	21.5	50.5	2.0	0.1
SIN ZB 20-6	0223200	•	6.0	20.0	21.5	50.5	2.0	0.1
SIN ZB 20-8	0223201	•	8.0	20.0	21.5	50.5	2.0	0.1
SIN ZB 20-9	0223207	•	9.0	20.0	21.5	50.5	2.0	0.1
SIN ZB 20-10	0223202	•	10.0	20.0	21.5	50.5	2.0	0.1
SIN ZB 20-11	0223208	•	11.0	20.0	21.5	50.5	2.0	0.1
SIN ZB 20-12	0223203	•	12.0	20.0	21.5	50.5	2.0	0.1
SIN ZB 20-13	0223209	•	13.0	20.0	21.5	50.5	2.0	0.1
SIN ZB 20-14	0223204	•	14.0	20.0	21.5	50.5	2.0	0.1
SIN ZB 20-15	0223210	•	15.0	20.0	21.5	50.5	2.0	0.1
SIN ZB 20-16	0223205	•	16.0	20.0	21.5	50.5	2.0	0.1
SIN ZB 20-17	0223211	•	17.0	20.0	21.5	50.5	2.0	0.1

• Can be supplied from stock

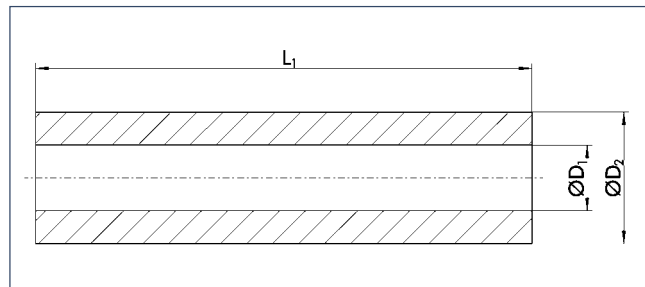
• Posible suministro de existencia

* For tool shank tolerance h₆

* Para una tolerancia de zanco de herramienta h₆

SINO SIN-ZB

with peripheral cooling
suitable for all SINO universal chucks



SINO SIN-ZB

con enfriamiento con periféricos
apto para todos los chucks universales SINO



Technical data

Datos técnicos

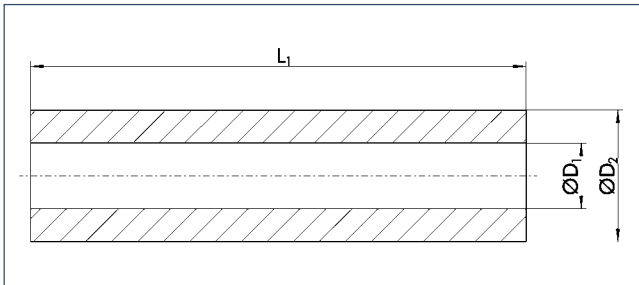
Description			D_1	D_2	L_1	m
Descripción	ID		[inch]	[inch]	[mm]	[kg]
SINO ZB 1/2"-1/8"	0209160	•	1/8"	1/2"	45.0	0.1
SINO ZB 1/2"-3/16"	0209161	•	3/16"	1/2"	45.0	0.1
SINO ZB 1/2"-1/4"	0209162	•	1/4"	1/2"	45.0	0.1
SINO ZB 1/2"-5/16"	0209163	•	5/16"	1/2"	45.0	0.1
SINO ZB 1/2"-3/8"	0209164	•	3/8"	1/2"	45.0	0.1
SINO ZB 3/4"-1/4"	0208910	•	1/4"	3/4"	50.5	0.1
SINO ZB 3/4"-5/16"	0208911	•	5/16"	3/4"	50.5	0.1
SINO ZB 3/4"-3/8"	0208912	•	3/8"	3/4"	50.5	0.1
SINO ZB 3/4"-7/16"	0208913	•	7/16"	3/4"	50.5	0.1
SINO ZB 3/4"-1/2"	0208915	•	1/2"	3/4"	50.5	0.1
SINO ZB 3/4"-9/16"	0208917	•	9/16"	3/4"	50.5	0.1
SINO ZB 3/4"-5/8"	0208918	•	5/8"	3/4"	50.5	0.1
SINO ZB 1 1/4"-1/4"	0208920	•	1/4"	1 1/4"	60.5	0.1
SINO ZB 1 1/4"-3/8"	0208921	•	3/8"	1 1/4"	60.5	0.1
SINO ZB 1 1/4"-1/2"	0208922	•	1/2"	1 1/4"	60.5	0.1
SINO ZB 1 1/4"-5/8"	0208923	•	5/8"	1 1/4"	60.5	0.1
SINO ZB 1 1/4"-3/4"	0208924	•	3/4"	1 1/4"	60.5	0.1
SINO ZB 1 1/4"-7/8"	0208925	•	7/8"	1 1/4"	60.5	0.1
SINO ZB 1 1/4"-1"	0208927	•	1"	1 1/4"	60.5	0.1

• Can be supplied from stock

• Posible suministro de existencia

SINO SIN-ZB

with peripheral cooling
suitable for all SINO universal chucks

**SINO SIN-ZB**

con enfriamiento con periféricos
apto para todos los chucks universales SINO

**Technical data****Datos técnicos**

Description			D ₁ *	D ₂	L ₁	m
Descripción	ID		[mm]	[mm]	[mm]	[kg]
SIN ZB 12-3	0209118	•	3.0	12.0	45.0	0.1
SIN ZB 12-4	0209119	•	4.0	12.0	45.0	0.1
SIN ZB 12-5	0209120	•	5.0	12.0	45.0	0.1
SIN ZB 12-6	0209121	•	6.0	12.0	45.0	0.1
SIN ZB 12-7	0209125	•	7.0	12.0	45.0	0.1
SIN ZB 12-8	0209122	•	8.0	12.0	45.0	0.1
SIN ZB 12-9	0209124	•	9.0	12.0	45.0	0.1
SIN ZB 12-10	0209123	•	10.0	12.0	45.0	0.1
SIN ZB 20-4	0208881	•	4.0	20.0	50.5	0.1
SIN ZB 20-5	0208882	•	5.0	20.0	50.5	0.1
SIN ZB 20-6	0208883	•	6.0	20.0	50.5	0.1
SIN ZB 20-8	0208885	•	8.0	20.0	50.5	0.1
SIN ZB 20-10	0208887	•	10.0	20.0	50.5	0.1
SIN ZB 20-12	0208889	•	12.0	20.0	50.5	0.1
SIN ZB 20-14	0208891	•	14.0	20.0	50.5	0.1
SIN ZB 20-16	0208893	•	16.0	20.0	50.5	0.1
SIN ZB 32-10	0209131		10.0	32.0	60.5	0.1
SIN ZB 32-12	0209132		12.0	32.0	60.5	0.1
SIN ZB 32-16	0209137		16.0	32.0	60.5	0.1
SIN ZB 32-20	0209139		20.0	32.0	60.5	0.1
SIN ZB 32-25	0209140		25.0	32.0	60.5	0.1

• Can be supplied from stock

• Posible suministro de existencia

* For tool shank tolerance h₆

* Para una tolerancia de zanco de herramienta h₆