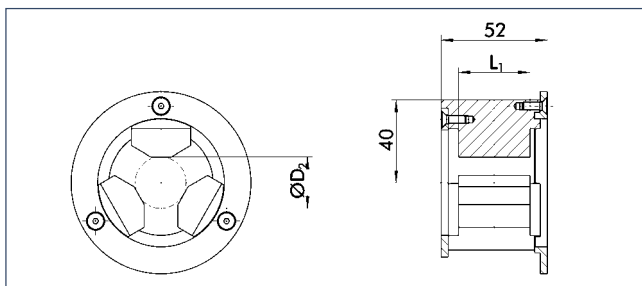


TRIBOS SRE-R

for TRIBOS-R

TRIBOS SRE-R

para TRIBOS-R



Technical data

Datos técnicos

For clamping diameter D_1			For diameter D_2		
Para diámetro de sujeción D_1			Para diámetro D_2		
[mm]	[inch]	ID	[mm]	[mm]	L_1
6.0		0201978	•	25.0	35.0
8.0	1/4"	0201980	•	28.0	35.0
10.0	3/8"	0201982	•	35.0	40.0
12.0		0201983	•	42.0	45.0
14.0		0201984	•	48.0	45.0
16.0	1/2", 5/8"	0201984	•	48.0	45.0
18.0	3/4"	0201984	•	48.0	45.0
20.0		0201984	•	48.0	45.0
25.0	1"	0201921	•	60.0	45.0
32.0	1 1/4"	0201922	•	67.0	45.0

• Can be supplied from stock

• Posible suministro de existencia

Spare plastic rings

suitable for all SRE parts

Anillos plásticos de recambio

válido para todos los módulos SRE

Technical data

Datos técnicos

D_1	ID	Ring	Anillo
6 - 20	9936839	•	Ø 72 small / pequeño
6 - 20	9936840	•	Ø 88 big / grande
25 / 32	9942628	•	Ø 76 small / pequeño
25 / 32	7008661	•	Ø 92 big / grande

• Can be supplied from stock

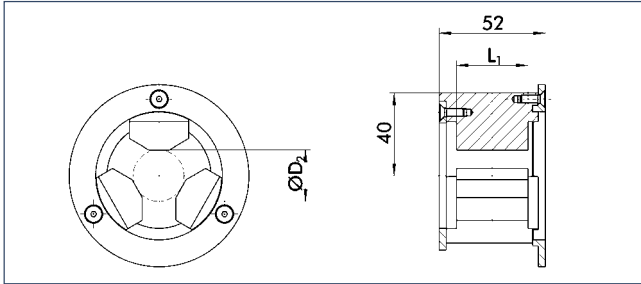
• Posible suministro de existencia

TRIBOS SRE-RM

for TRIBOS-RM

TRIBOS SRE-RM

para TRIBOS-RM



Technical data

Datos técnicos

For mounting Para montaje	ID		D ₂ [mm]	L ₁ [mm]
HSK-E 25	0201892	•	20.0	35.0
HSK-E 32	0201893	•	25.0	35.0
HSK-E 40	0201894	•	32.0	35.0

- Can be supplied from stock

- Posible suministro de existencia

 Additional sizes and special designs available on request

 Tamaños adicionales y diseños especiales disponibles sobre pedido



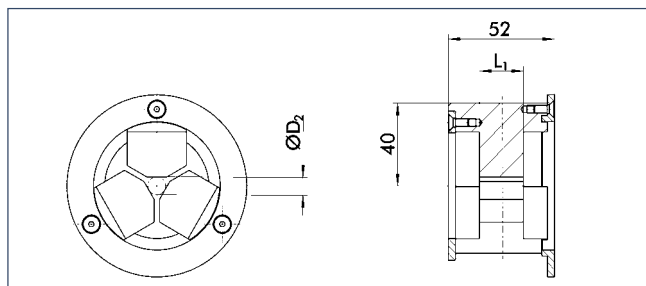
TRIBOS Reduction Inserts • Insertos de reducción TRIBOS

TRIBOS SRE-S

for TRIBOS-S, TRIBOS-SVL and TRIBOS-Mini

TRIBOS SRE-S

para TRIBOS-S, TRIBOS-SVL y TRIBOS-Mini



Technical data

Datos técnicos

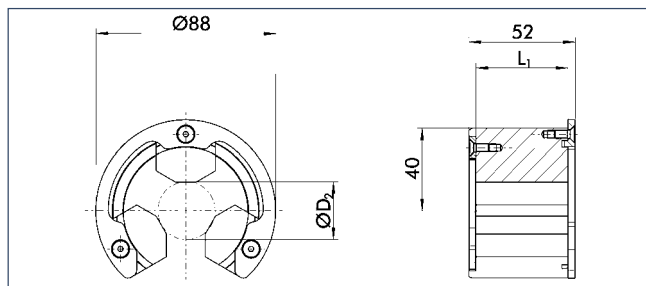
For clamping diameter D_1			D_2			L_1		
Para diámetro de sujeción D_1								
[mm]	[inch]	ID		[mm]	[mm]			
3.0	1/8"	0201971	•	9.0	21.5			
4.0	3/16"	0201971	•	9.0	21.5			
5.0		0201971	•	9.0	21.5			
6.0		0201972	•	10.0	35.0			
	1/4"	0201988		10.3	35.0			
8.0	5/16"	0201973	•	13.0	35.0			
	3/8"	0201989		15.0	45.0			
10.0		0201974	•	16.0	40.0			
12.0		0201975	•	19.0	45.0			
	1/2"	0201991		20.0	45.0			
14.0		0201976		22.0	45.0			
16.0	5/8"	0201977	•	25.0	45.0			
18.0		0201979		28.0	45.0			
	3/4"	0201992		29.0	45.0			
20.0		0201981	•	30.0	45.0			
25.0		0201987		36.0	45.0			
	1"	0201993		36.5	45.0			
32.0	1 1/4"	0201998		45.0	45.0			

• Can be supplied from stock

• Posible suministro de existencia

SRE-S opened laterally (C-Style)

alternatively for lateral insertion



Technical data

For clamping diameter D ₁			D ₂	L ₁
Para diámetro de sujeción D ₁				
[mm]	[inch]	ID	[mm]	[mm]
3.0		25000764	• 9.0	22.5
4.0	1/8", 3/16"	25000764	• 9.0	22.5
5.0		25000764	• 9.0	22.5
6.0		25000587	• 10.0	35.0
	1/4"	25001067	• 10.0	45.0
8.0	5/16"	25000588	• 13.0	35.0
	3/8"	25000996	• 19.0	45.0
10.0		25000589	• 16.0	40.0
12.0		25000568	• 19.0	45.0
	1/2"	25000910	• 20.0	45.0
14.0		25000590	• 22.0	45.0
16.0	5/8"	25000591	• 25.0	45.0
18.0		25000592	• 28.0	45.0
	3/4"	25001026	• 29.0	45.0
20.0		25000569	• 30.0	45.0
25.0		25000946	• 36.0	45.0
	1"	25001684	• 36.0	45.0
32.0	1 1/4"	25001092	• 45.0	45.0

SRE-S con apertura lateral

alternativa para inserción lateral



Datos técnicos

SRE-R (C-Style)

alternatively for lateral insertion

Technical data

For clamping diameter D ₁			D ₂	L ₁
Para diámetro de sujeción D ₁				
[mm]	[inch]	ID	[mm]	[mm]
6.0		25000593	25.0	35.0
8.0	1/4"	25000594	28.0	35.0
10.0	3/8"	25000570	35.0	40.0
12.0		25000595	42.0	45.0
14.0		25000596	48.0	45.0
16.0	1/2", 5/8"	25000596	48.0	45.0
18.0	3/4"	25000596	48.0	45.0
20.0		25000596	48.0	45.0
25.0	1"	–	60.0	45.0
32.0	1 1/4"	–	67.0	45.0

SRE-R (C-Style)

alternativa para inserción lateral

Datos técnicos