

Adjustable housing for proximity switch

The adjustable housings enable the position of the sensor to be set once only. If the sensor is changed, the sensor position is retained.



Function description

The sensor is inserted in the adjustable housing and fastened with the coupling ring. Next, the switching position is set. When the sensor is changed, the adjustable housing remains in the same location — only the sensor is changed by removing the coupling ring.

Your advantages and benefits

Setting has to be carried out only once
for rapid sensor replacement without recalibration

Corrosion-free material
for a long service life

Switches are protected against shocks
preventing mechanical destruction

Application example

Area of application

For universal use in the monitoring of automation modules with proximity switches



1 NHG adjustable housing

2 SRU 63 Flat Rotary Actuator

General information

Warranty
24 months

Notes

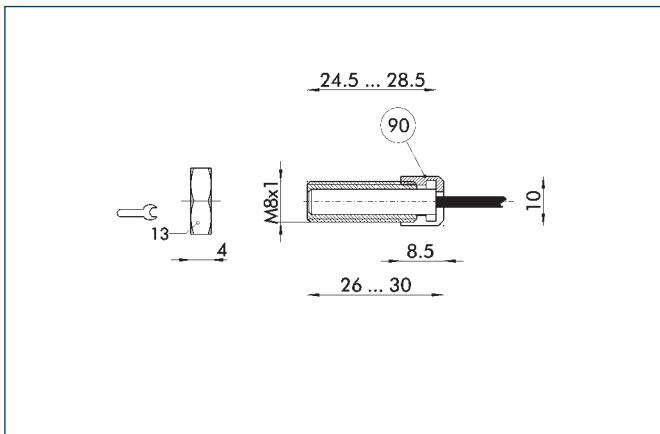
The coupling ring is slotted for fitting onto the cable.



Technical data

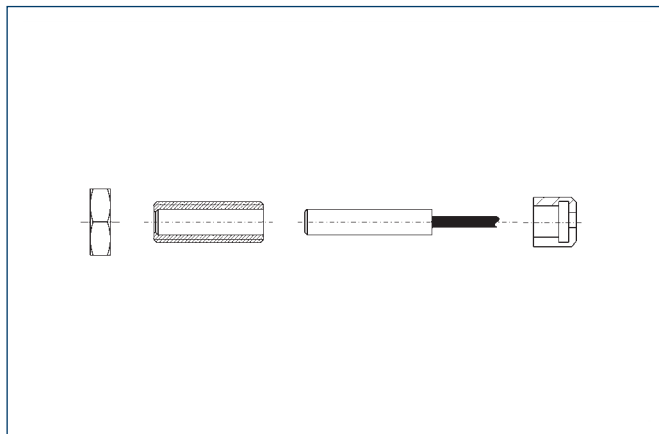
Description		NHG 5	NHG 8
	ID	9646006	9646007
Suitable sensor Ø		M5	M8
Min. sensor length	[mm]	31.5	24.5
Max. sensor length	[mm]	35.5	28.5
Weight	[kg]	0.008	0.006
Material		Steel	Steel

NHG 5

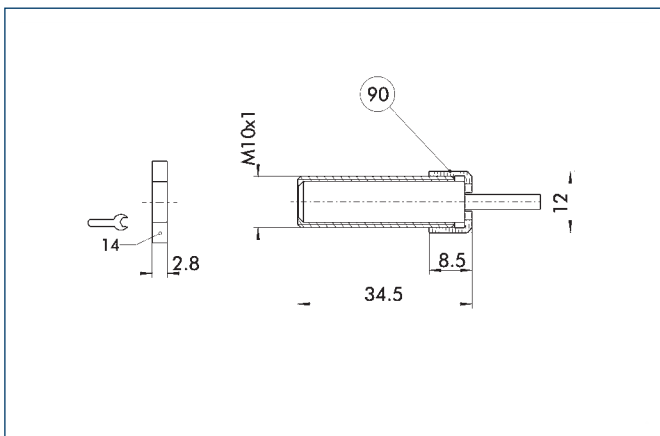


90 Coupling ring is slotted for fitting onto the cable

NHG 5 assembly



NHG 8



90 Coupling ring is slotted for fitting onto the cable

NHG 8 assembly

